



**TRB**  **2020**  
ANNUAL MEETING

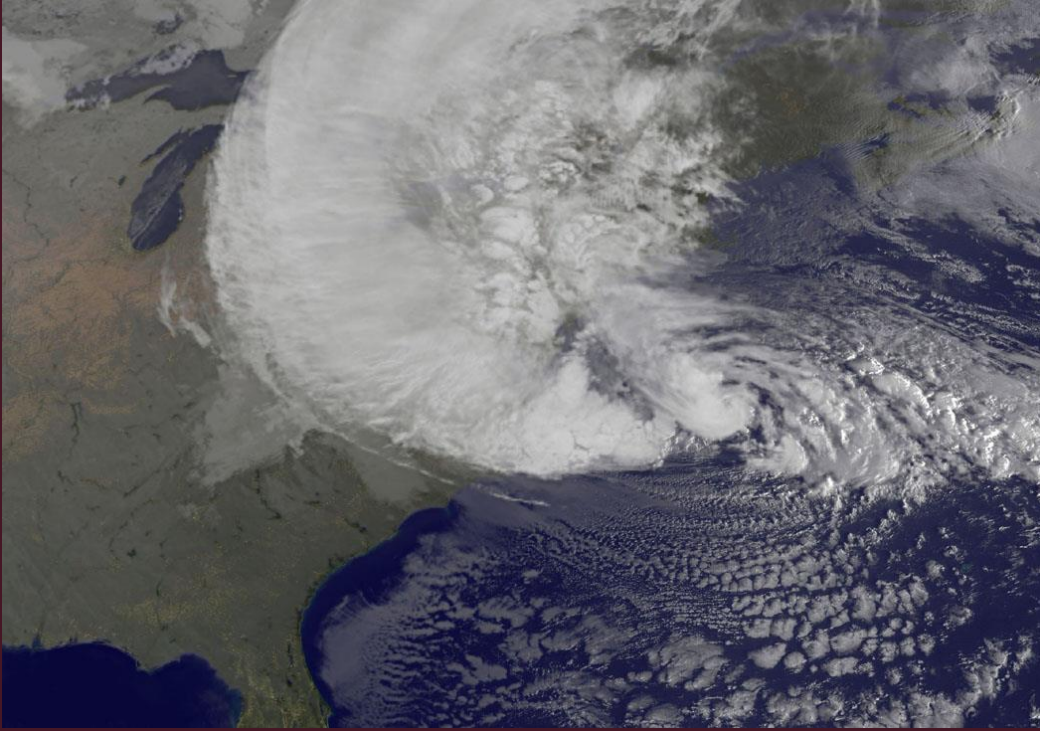
99<sup>TH</sup> Annual Meeting  
Washington, D.C.  
January 12–16, 2020

**DIVISION OF STATEWIDE  
PLANNING**

**BUREAU OF STATEWIDE  
STRATEGIES/MPO UNIT**

**Monica Etz  
Brian Leckie**

# Travel behavior during Emergency Evacuations



- 58% will leave
- 45% will go to a shelter
- Wind is not the biggest danger
- Tourists act different
- Traffic jams
- Pets

➤ More data means better emergency planning



# Transportation Solutions in Parks and Public Lands



*Hanging Lake, Colorado*



# Transportation Solutions in Parks and Public Lands

## *The Study*

- A capacity analysis was done
- Visitor exit surveys
- Input from local stakeholders
- Strong partnerships

## *The Solution*

- On-line reservation system to limit visitors
- Staggered entrance times
- Lots of good publicity



- Great success! A whole different experience and traffic congestion eliminated.



Acadia National Park, Maine







*Acadia National Park, Maine*

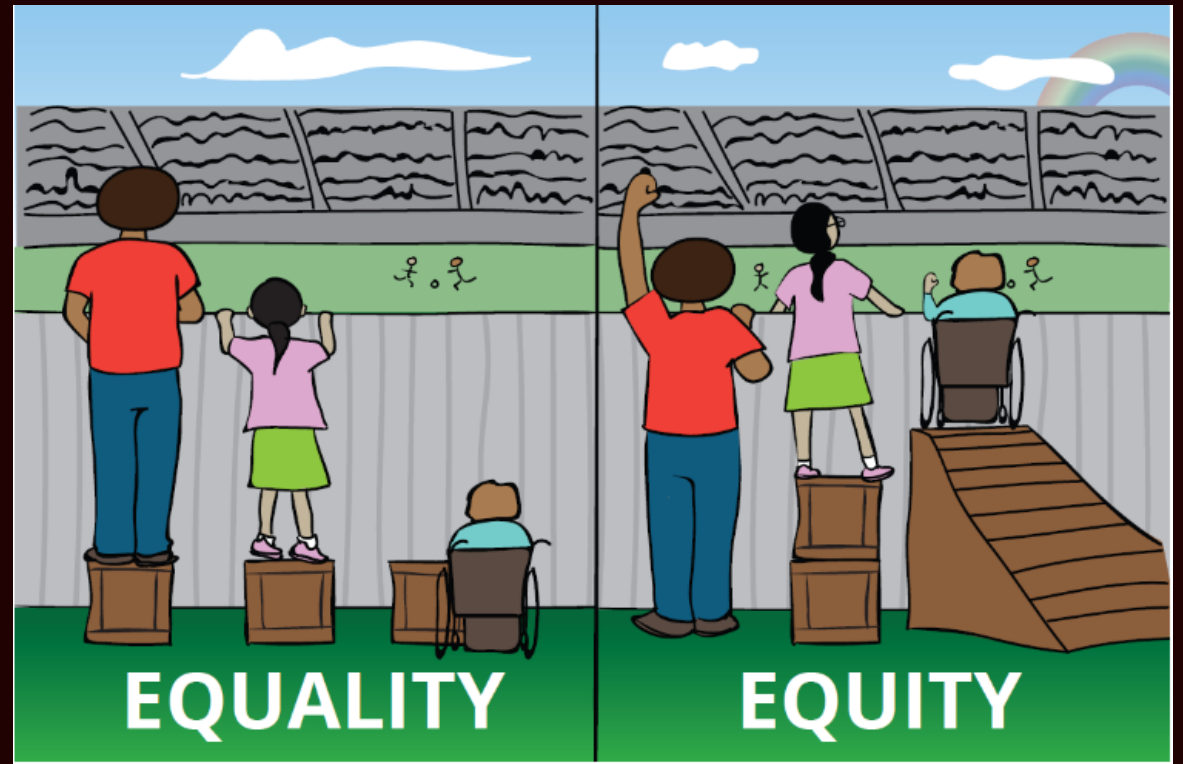


# Transportation Solutions in Parks and Public Lands



# Planning at a Crossroads

- PennDOT Connects
- Equity!
- Reliability!
- Go beyond compliance/checklist
- Long Range Plan challenges





# Right-Sizing

- “A process by which a transportation agency makes intentional decisions to adjust the size, extent, function and composition of its existing or planned infrastructure and service portfolio in response to changing needs over time.”
- Agency-wide or specific programs and projects
- Economically sustainable investments
- Roundabout-based road diet

**EFFICIENCY!**



# Examples of Right-Sizing

---

The Tennessee Department of Transportation implements an initiative to strategically relax design standards, saving the department over \$170 M on the first ten projects under the new policy.

Rochester, NY transforms an under-utilized sunken section of expressway into an at-grade "complete street" with private development creating over \$250 M of value in the local economy in addition to millions more in life cycle cost savings

An initiative in Dallas, TX identifies opportunities to generate nearly \$500 M in development by re-aligning routes and re-using highway infrastructure -- boosting property values by about \$2.5 B, adding 40,000 jobs, and increasing property tax revenue by \$80 M