



Crowdsourcing for Wildlife Road Crossings

Sarah Haggerty
Maine Audubon
October 17, 2019



Vehicles and Wildlife Don't Mix

- In the U.S., >200 motorists are killed and nearly 30,000 injuries annually in crashes with wildlife
- Costs *\$\$BILLIONS* annually
- ~*1MILLION* vertebrates killed daily by cars in the U.S.

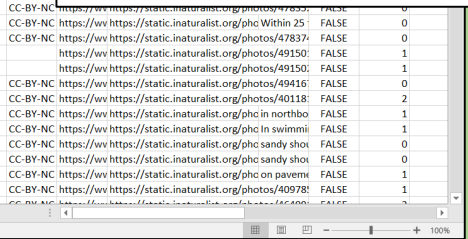
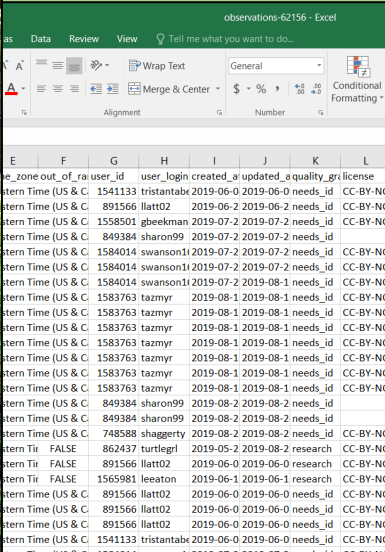


What Can We Do?

- Identify the worst areas where animals are getting hit
- Work with DOT and towns
- Find local solutions



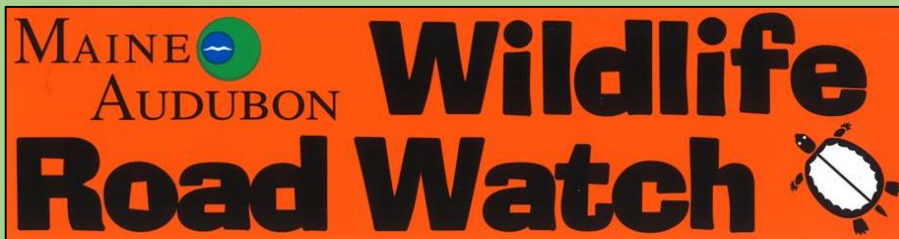
- Ability to collect a lot of data
- Ability to cover a lot of area
- Community connections



Wildlife Road Watch



- Online tool – created with and hosted by UC Davis Road Ecology Center
- Upload photos, describe what you see
- Information used to identify “hotspots” of roadkill



MAINE AUDUBON Wildlife Road Watch

Home News Blogs Maps Data Animals About Add observation

dead animal id: 7059

View Edit Outline Revisions

Submitted by: salhaggerty on October 19, 2017 - 9:50am

Animal Information

Animal: Eastern Gray Squirrel
Animal Group: Squirrels and Allies
Estimated Age Class: adult
Identification Confidence: 100% certain

Observation Date

Observation Date: Thursday, October 19, 2017 - 9:00am

Geography

Map Satellite

SANT HILL Pine Grove Preserve MAINE AUDUBON Portland Country Club WAITES LANDING

Location Description:
On Route 1 in Falmouth, heading S from Exit 10 off of 295. Animal was on the right hand side of the road in the wide, road intersection where Route 1 and Fordside Road came together, between commercial development and residential development.

Wildlife Road Watch

- Sponsors
- Contact Us

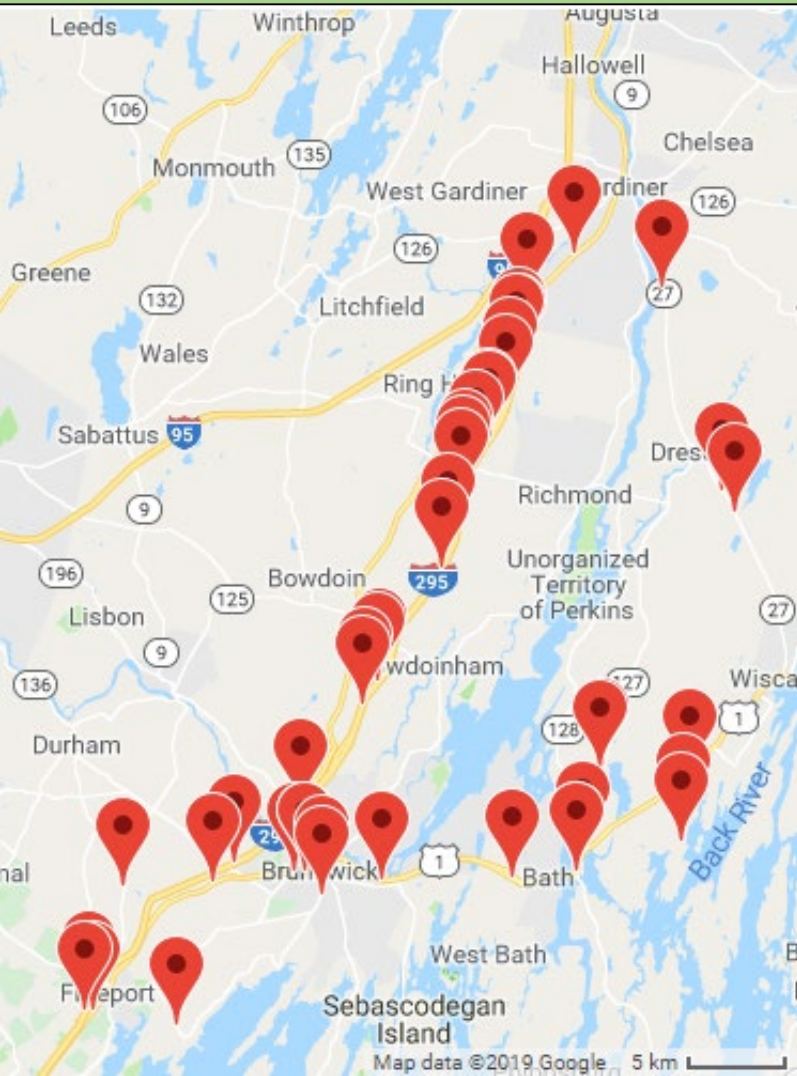
Observer Menu

- Enter Observation
- Live Wildlife Observation
- Dead Wildlife Observation
- No Wildlife Observation
- Wildlife Tracks and Signs Observation
- Add Adopt a Road Route
- Add Animal
- Add Field Blog
- Add News
- Add Project
- Add Webpage
- My Observations
- My Maps
- My Account
- Logout

Site Management

- Adopt a Road Routes
- Export Observations
- Observation Photos
- Observation Revisions
- Observer Observations
- Observers
- Observation Resolution

WRW Hotspot Analysis



Map 2 of 2

I-295

53 miles with 382 observations
(7.2 observations/mile)

High Density Locations & Hotspots Overlap

Brunswick Route 1 Interchange

Bowdoinham (Exit 37 Interchange Route 125 to North of Millery Road)

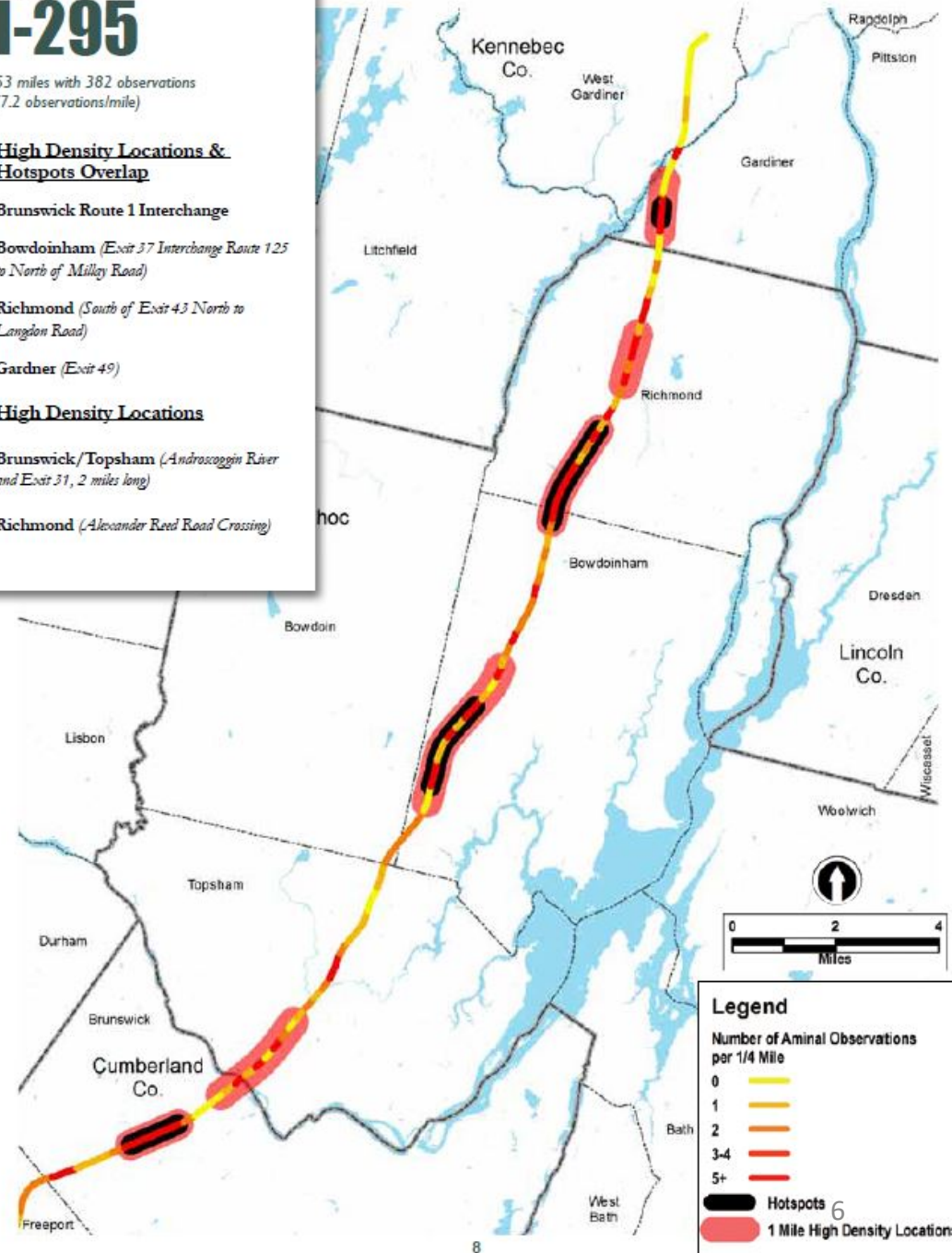
Richmond (South of Exit 43 North to Langdon Road)

Gardiner (Exit 49)

High Density Locations

Brunswick/Topsham (Androscoggin River and Exit 31, 2 miles long)

Richmond (Alexander Reed Road Crossing)



Maine Turtle Roadkill Survey

- Three year Citizen Science project (2018 – 2020)
- Statewide survey routes
- Survey ≥ 3 times/year
- Survey May - September



Maine Turtle Roadkill Survey

- Use iNaturalist for data
- Over 100 volunteers trained
- Over 600 observations
- 186 turtles, including all 4 state-listed species



iNaturalist

Observations ▾ Species ▾ Projects ▾ Places Guides People

0 0 shaggerty ▾

« Projects Terms & Rules | Edit project

ADD OBSERVATIONS

Maine Turtle Roadkill Survey

MAINE AUDUBON MAINE DEPARTMENT OF TRANSPORTATION MAINE DOT

Stats

Totals	Most Observations	Most Species	Most Observed Species
0	Unknown	Unknown	Unknown

8

Working Towards Solutions

- Working with DIFW to identify good locations for seasonal signs
- Locals creating signs
- Girl Scout signs at Maine Audubon Sanctuary



Working Towards Solutions

- Stream Smart – training program to encourage/teach appropriate road-stream Xings
- New! – Wildlife passage design gets extra points in state grant



Working Towards Solutions

- Stream Smart – training program to encourage/teach appropriate road-stream Xings
- New! – Wildlife passage design gets extra points in state grant



Next Steps

- Complete Turtle Project (year 3)
- Work with towns, MaineDOT, IFW on solutions
- Upgrade Wildlife Road Watch to include mobile application and on-the-fly hotspot ID





THANKS!

Sarah Haggerty
Conservation Biologist
Maine Audubon
shaggerty@maineaudubon.org
(207) 781-2330 ext.225