

“Infrastructure as Adaptation”

Caleb D. Stratton AICP, CFM

Chief Resilience Officer



NJDOT Bureau of Research, Technology Transfer Program: Tech Talks

Wednesday June 5, 2019



Hurricane Irene
August 2011

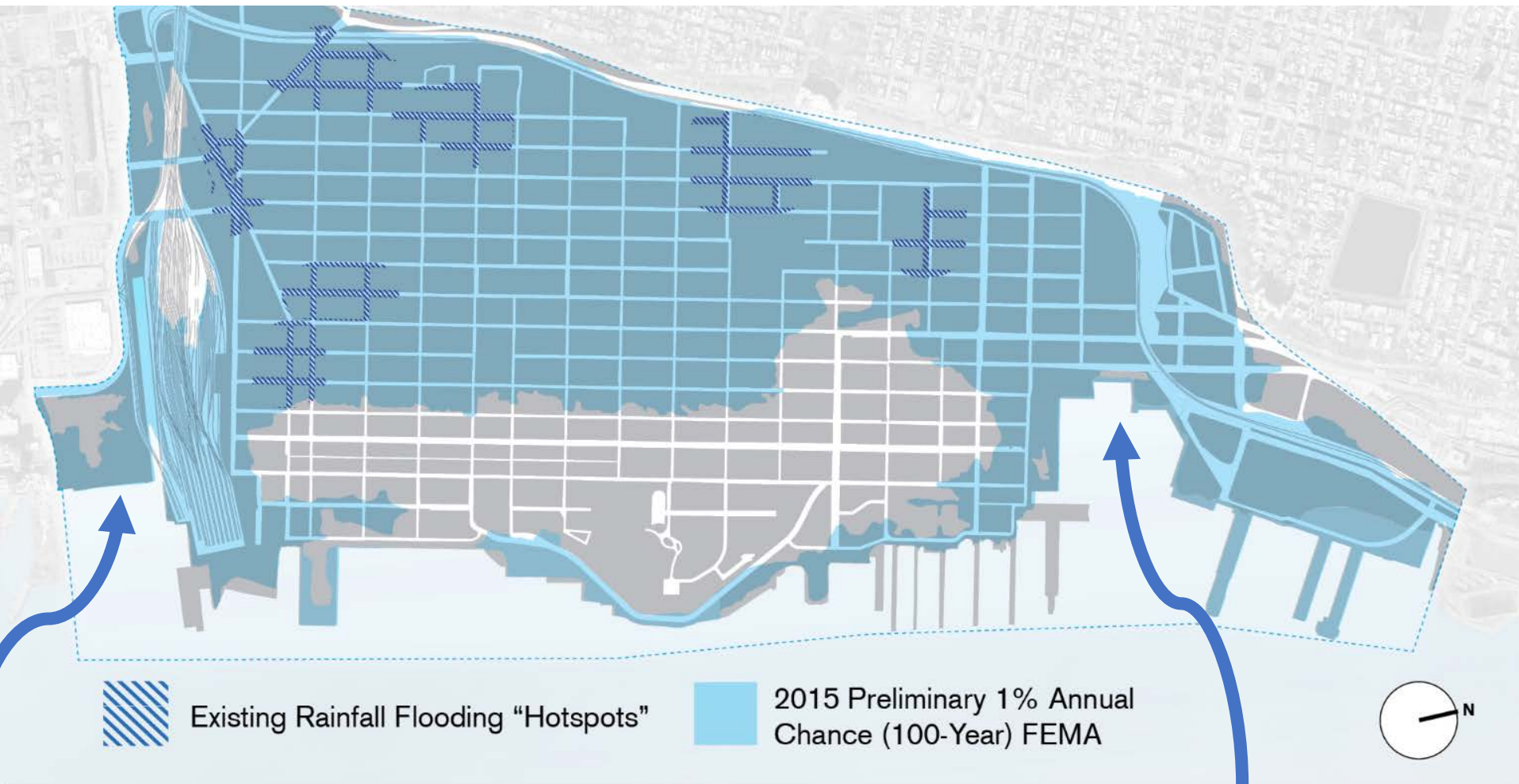


Superstorm Sandy

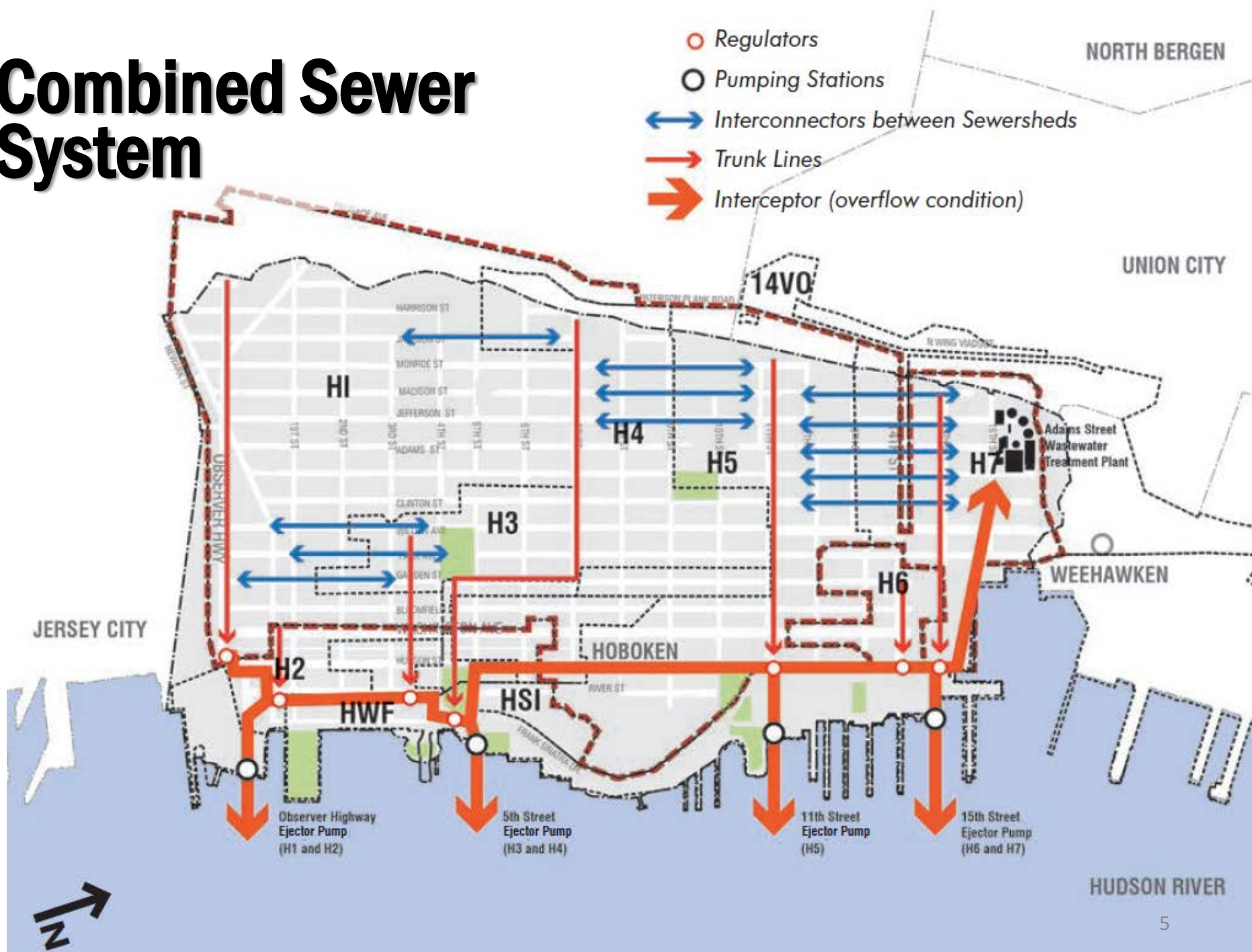
October 2012

Flood Risk

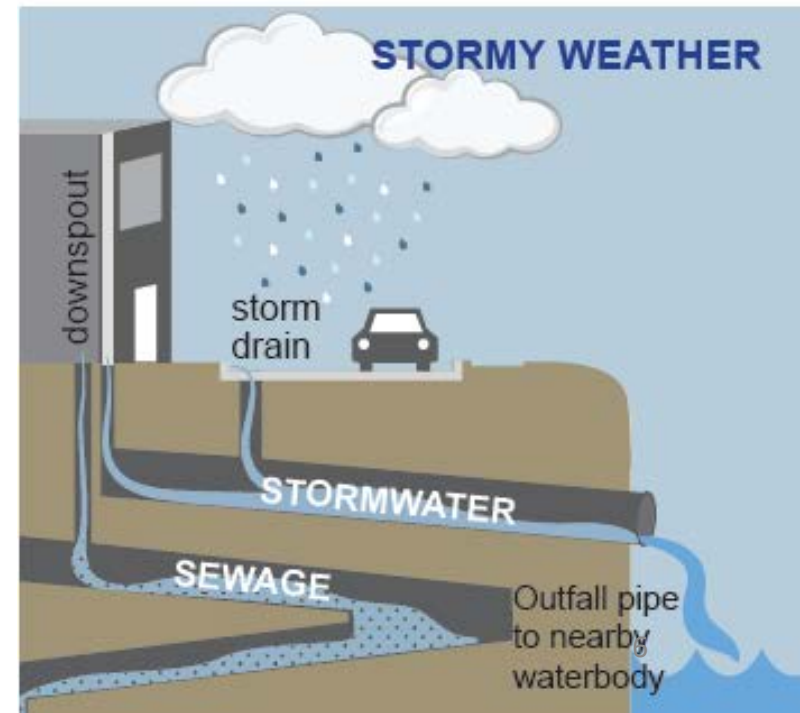
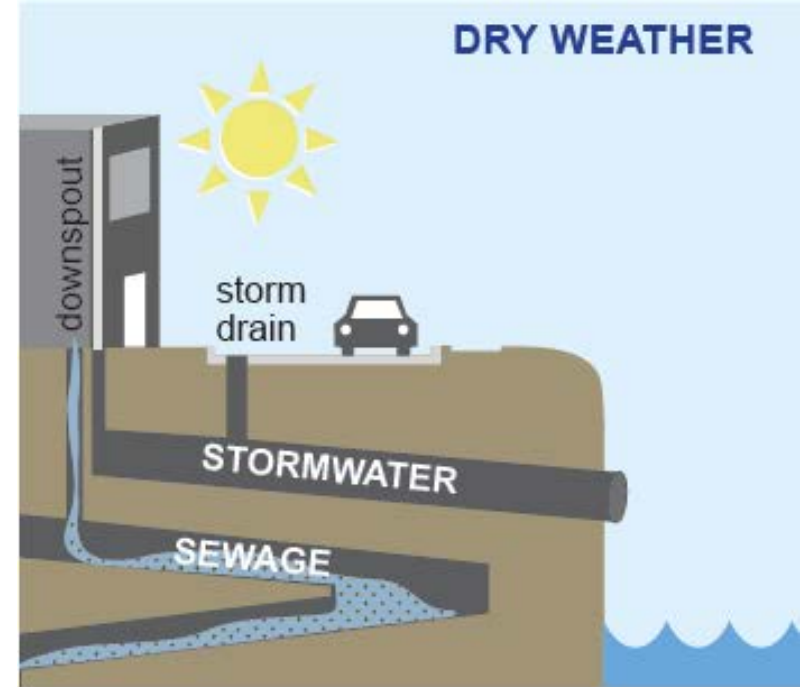
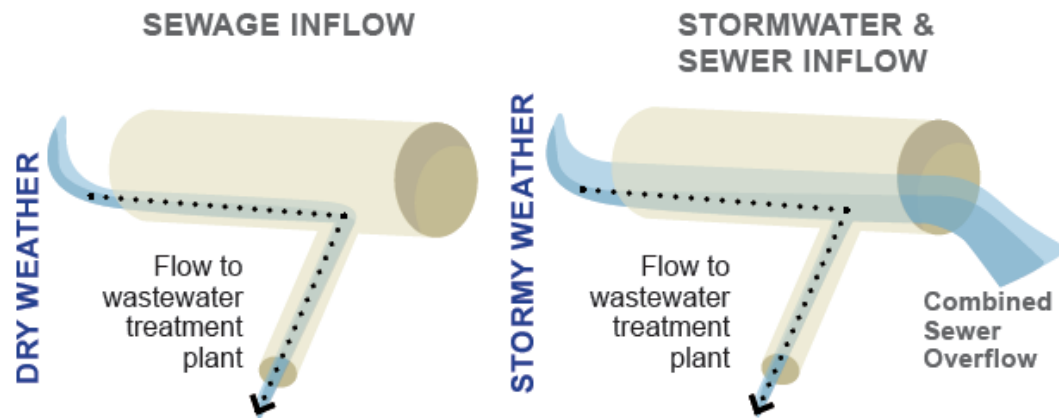
Landmass within Flood Zone (A): 63.85%
Landmass within Flood Zone (V): 7.41%
Landmass within Flood Zone (X): 7.66%
Hoboken NFIP Total Liability: \$1,922,187,500
Hoboken NFIP Annual Premiums: \$5,984,720



Combined Sewer System



Combined Sewer Overflows



City-wide Green Infrastructure Strategy

RETENTION



CONSTRUCTED
WETLANDS



SUBSURFACE
STORAGE



BASF
SITE

PINO
SITE

BLOCK 12
SITE

DETENTION



GREEN ROOFS



RAINWATER
HARVESTING

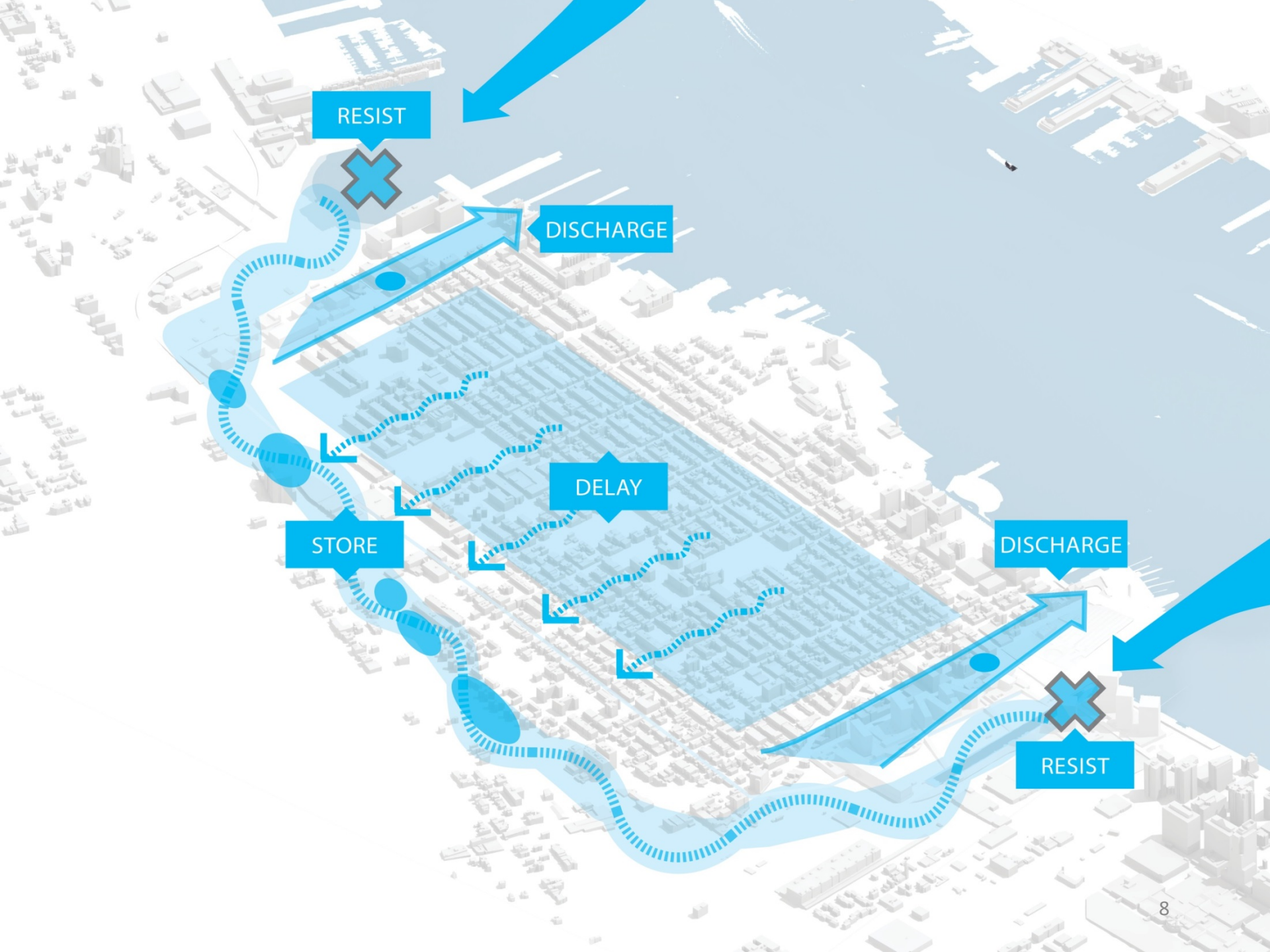


BIOSWALES



STORMWATER
PLANTERS

INFILTRATION



RESIST

DISCHARGE

DELAY

STORE

DISCHARGE

RESIST















Southwest Park



**BIOSWALE
BUMP-OUTS**

DOG RUN

**INTERACTIVE
SCULPTURE
IN LAWN**

EVENT SPACE

RAIN GARDEN

**SHADED
SEATING**

**POP-UP
MARKET
ZONE**

**RAIN
GARDEN**

**TEMPORARY
CLOSING ON
MARKET/EVENT DAY**

STORM EVENT

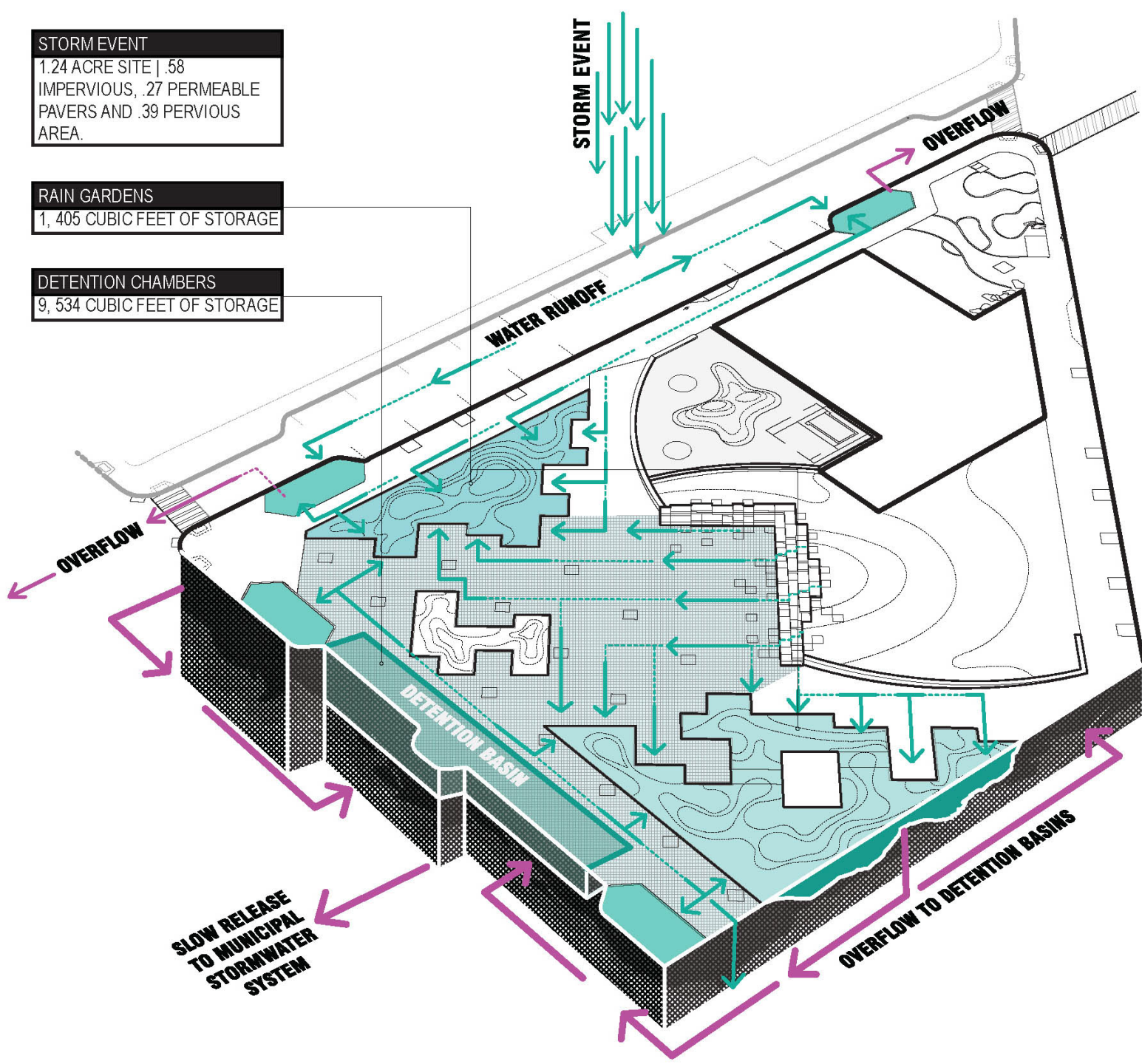
1.24 ACRE SITE | .58
IMPERVIOUS, .27 PERMEABLE
PAVERS AND .39 PERVIOUS
AREA.

RAIN GARDENS

1,405 CUBIC FEET OF STORAGE

DETENTION CHAMBERS

9,534 CUBIC FEET OF STORAGE





7th & Jackson Park





**MONROE
CENTER**



MADISON ST

MADISON LOWLAND GARDEN

BASKETBALL
BASIN

NORTHWEST FIELD

LOOKOUT
HILL

PLAY VALLEY

JEFFERSON ST

PARK PAVILION &
SHADE STRUCTURE

GROVE

FOUNTAIN/
ICE RINK

PUMP
GARDEN

12TH ST

STAGE

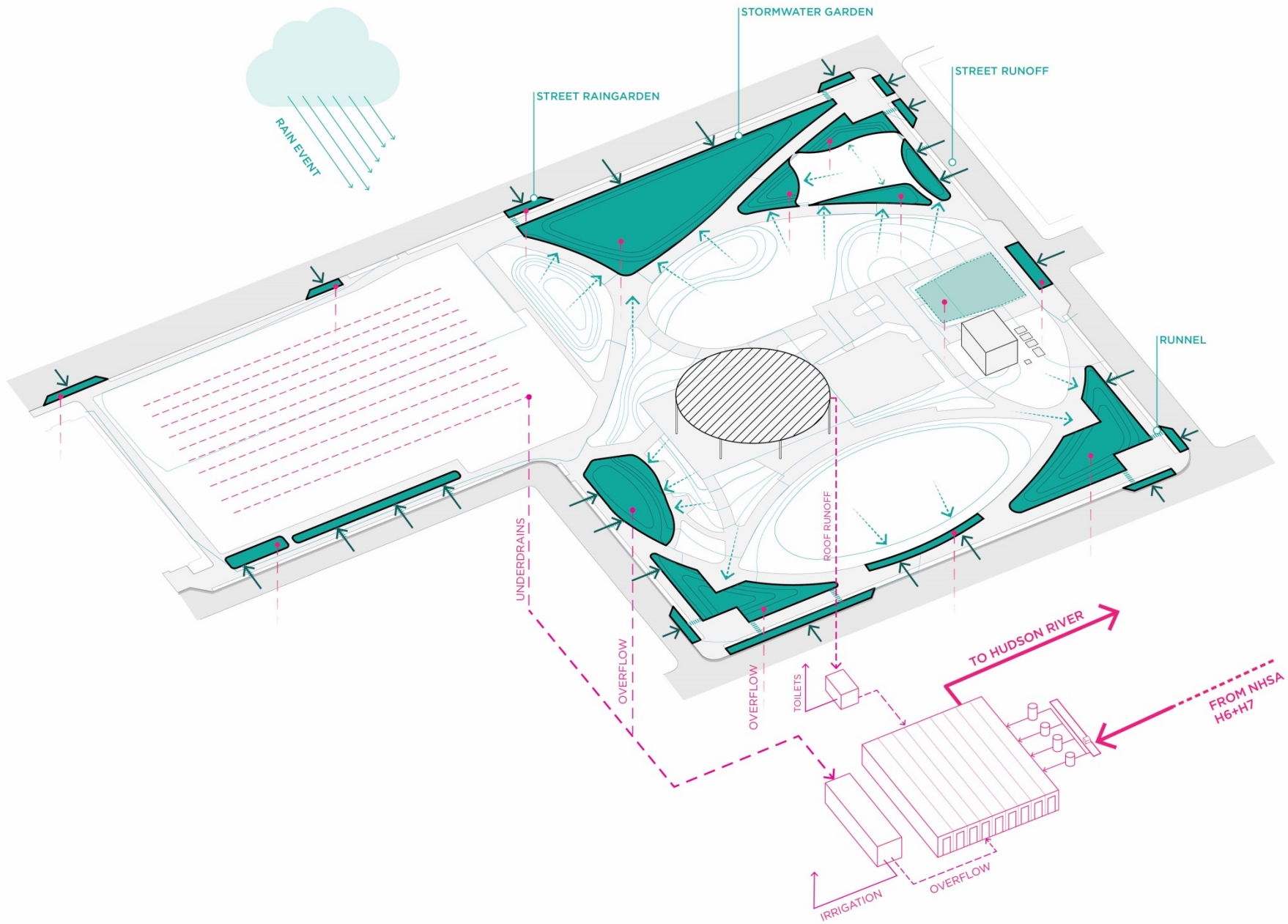
13TH ST

GREAT LAWN

ADAMS & 12TH
LOWLAND GARDEN

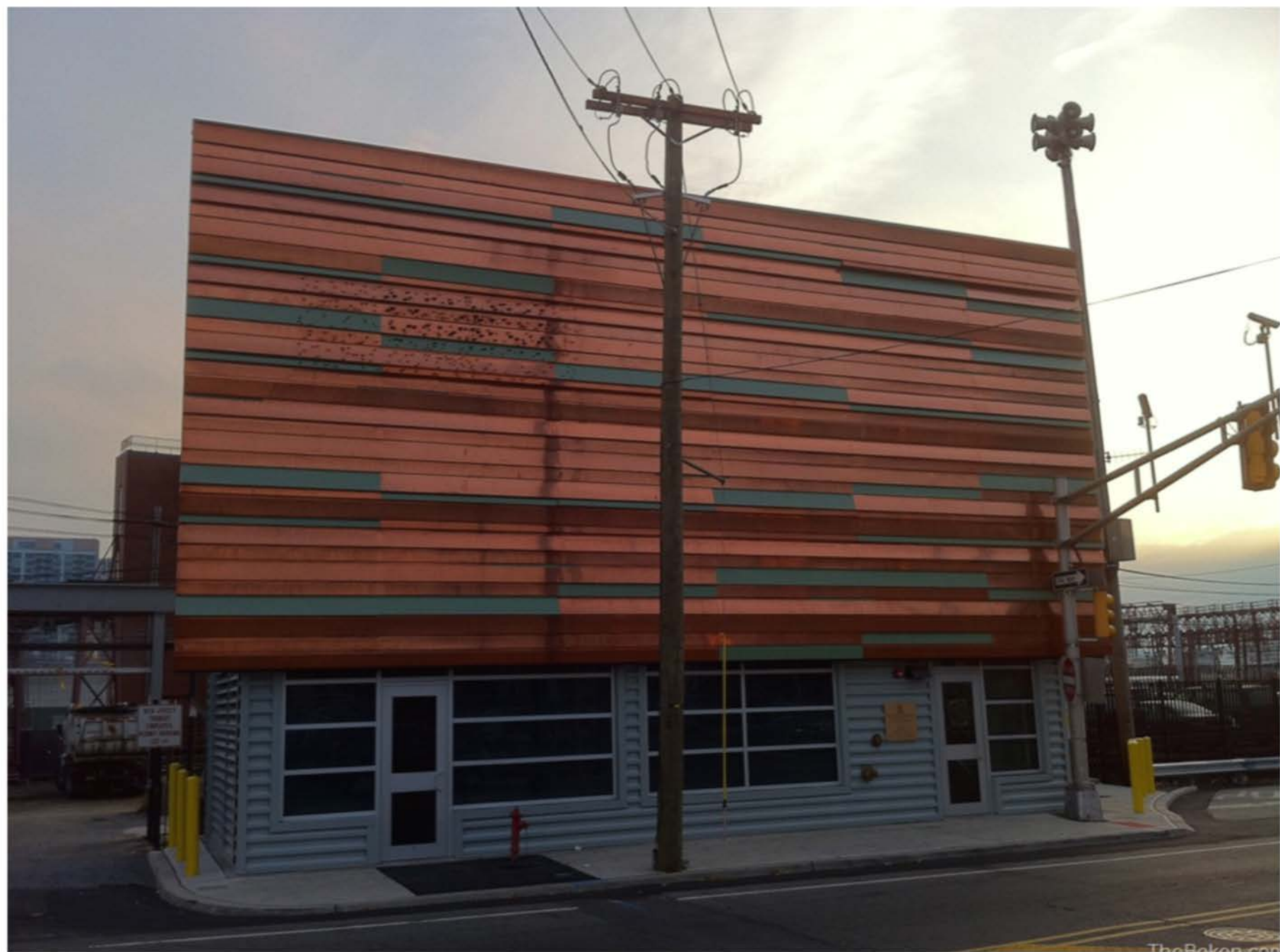
ADAMS & 13TH
LOWLAND GARDEN

ADAMS ST



H1 and H5 Pump Stations









Details



Basemap



About




Content



Legend

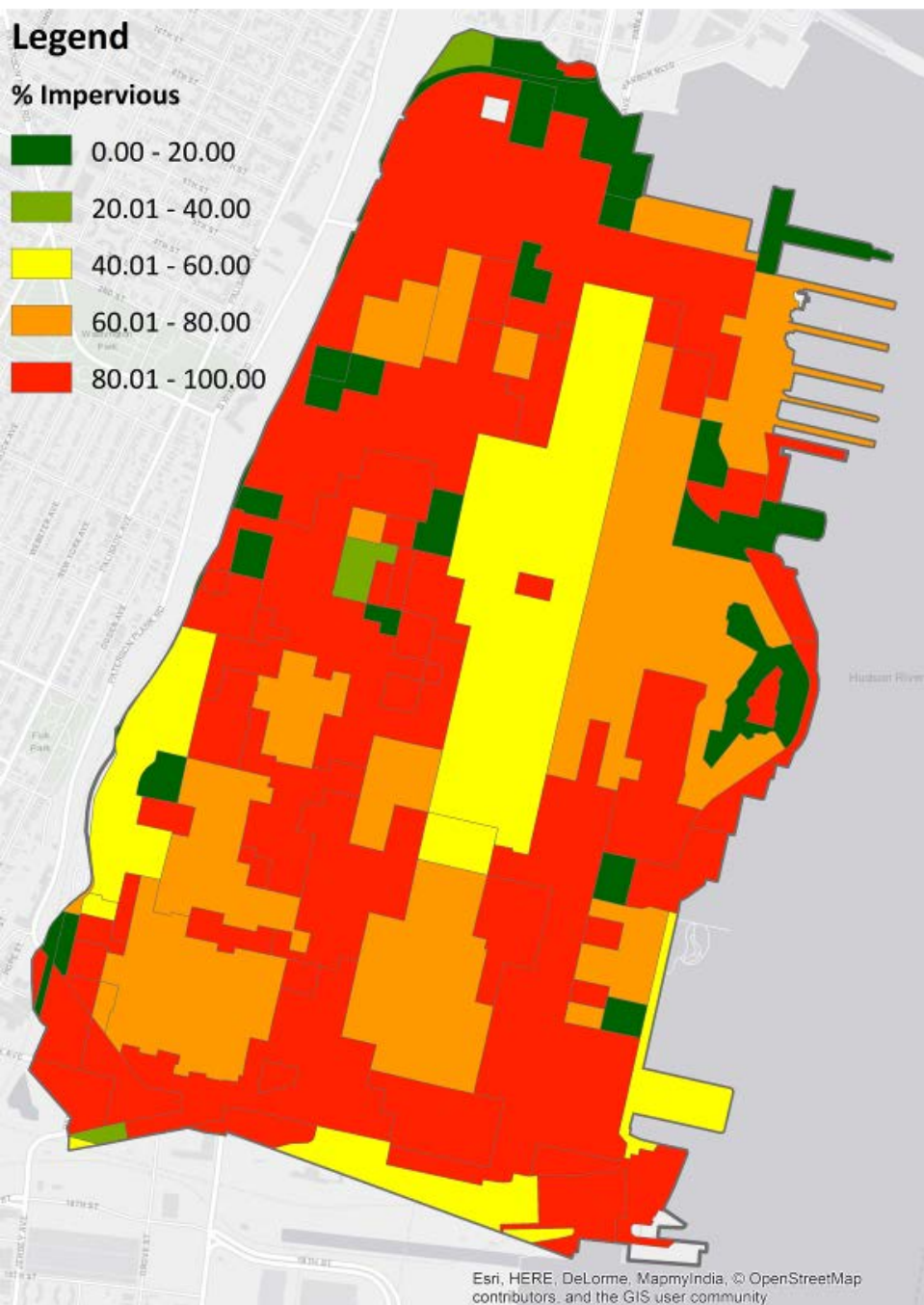
Contents

- ☒ Coastal Flood Mitigation (line)
- ☒ Coastal Flood Mitigation (poly)
- ☒ Rainfall Flood Mitigation (point)

- ☒ Rainfall Flood Mitigation (line)
- ☒ Rainfall Flood Mitigation (poly)
- ☒ Drinking Water (line)
- ☒ Energy and Communications (line)
- ☒ Energy and Communications (poly)
- ☒ Community and Government Facilities (poly)
- ☒ Transportation (line)
- ☒ Natural Resources (poly)



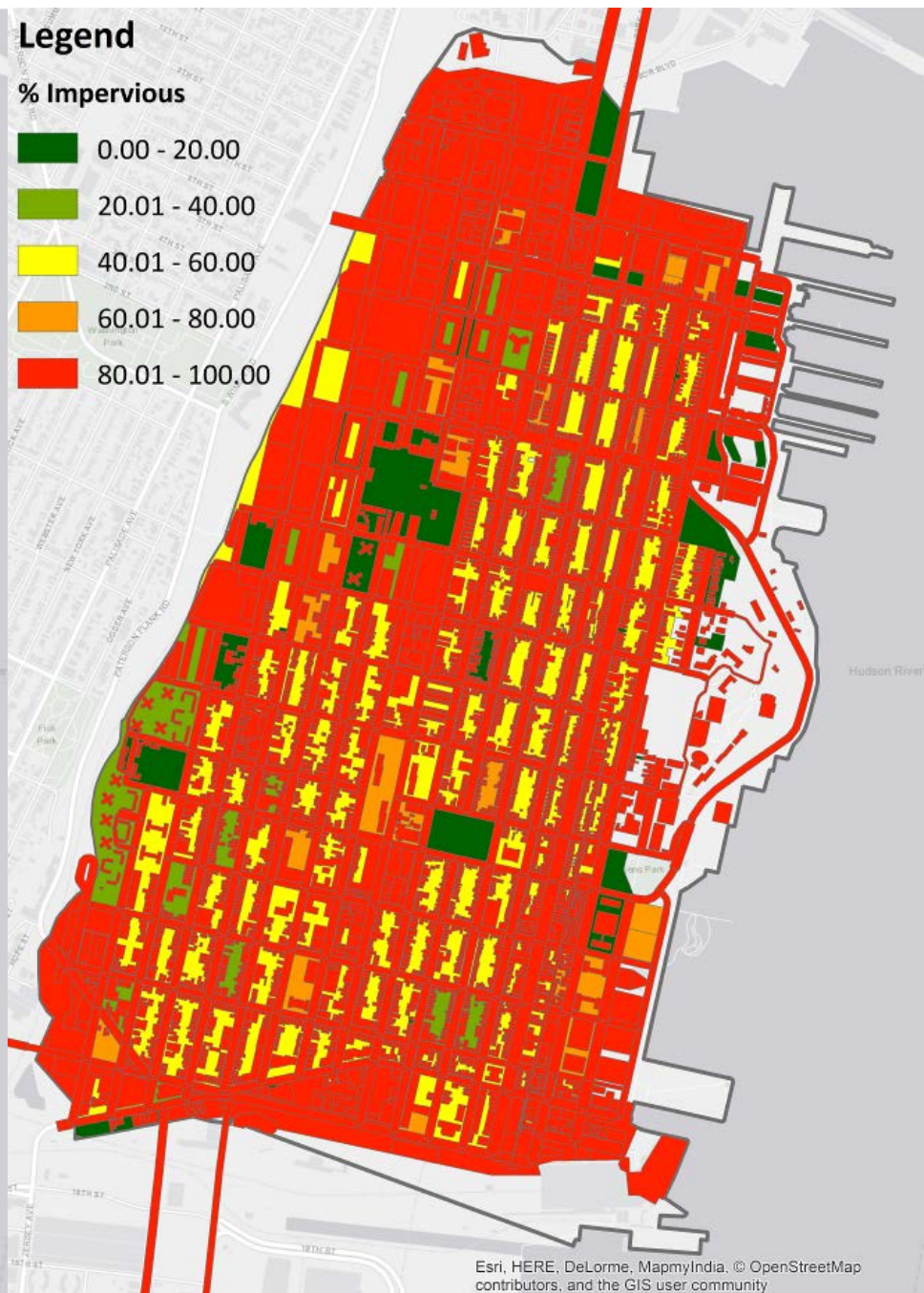
Legend

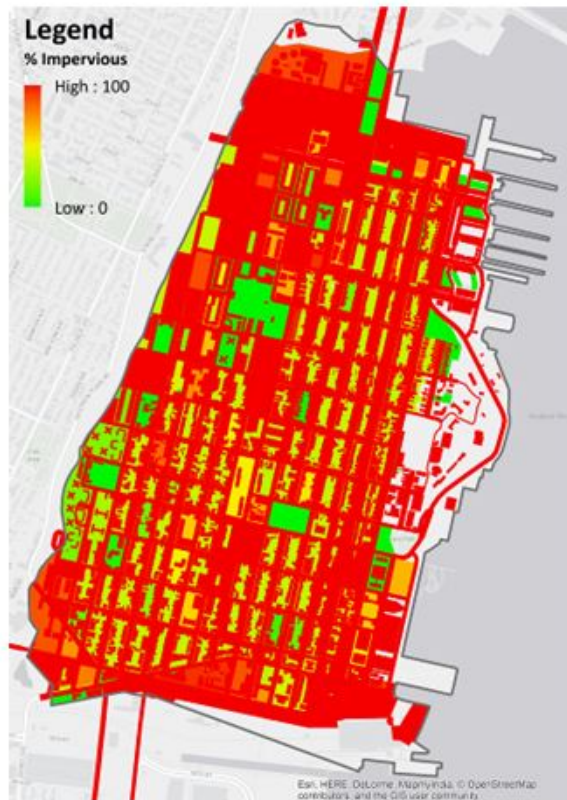
% Impervious



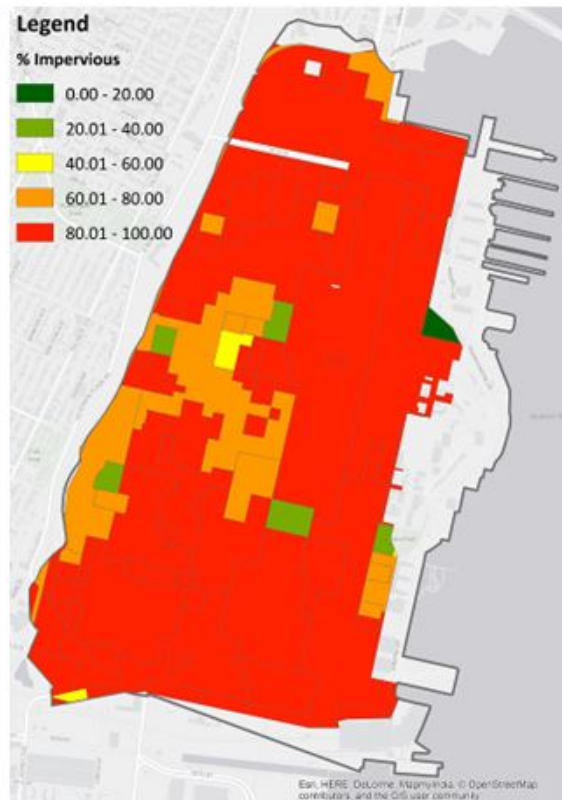
Legend

% Impervious

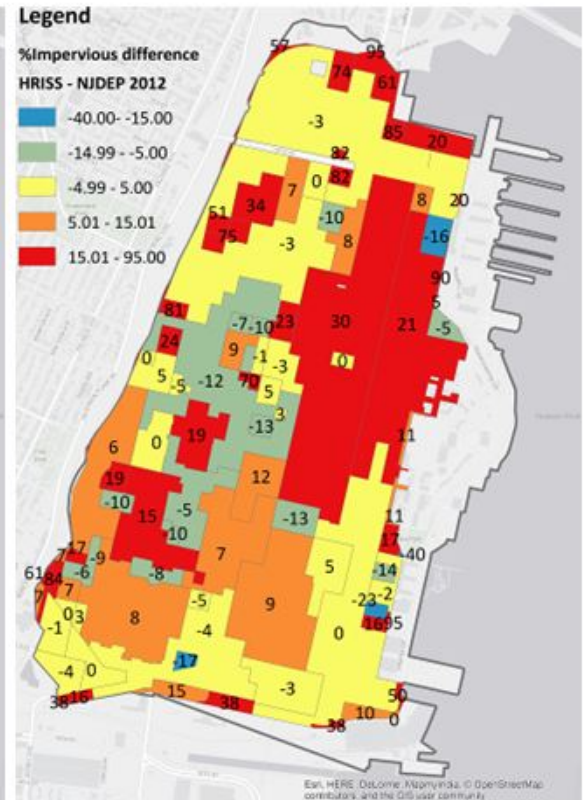




(a)

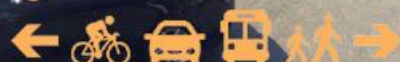
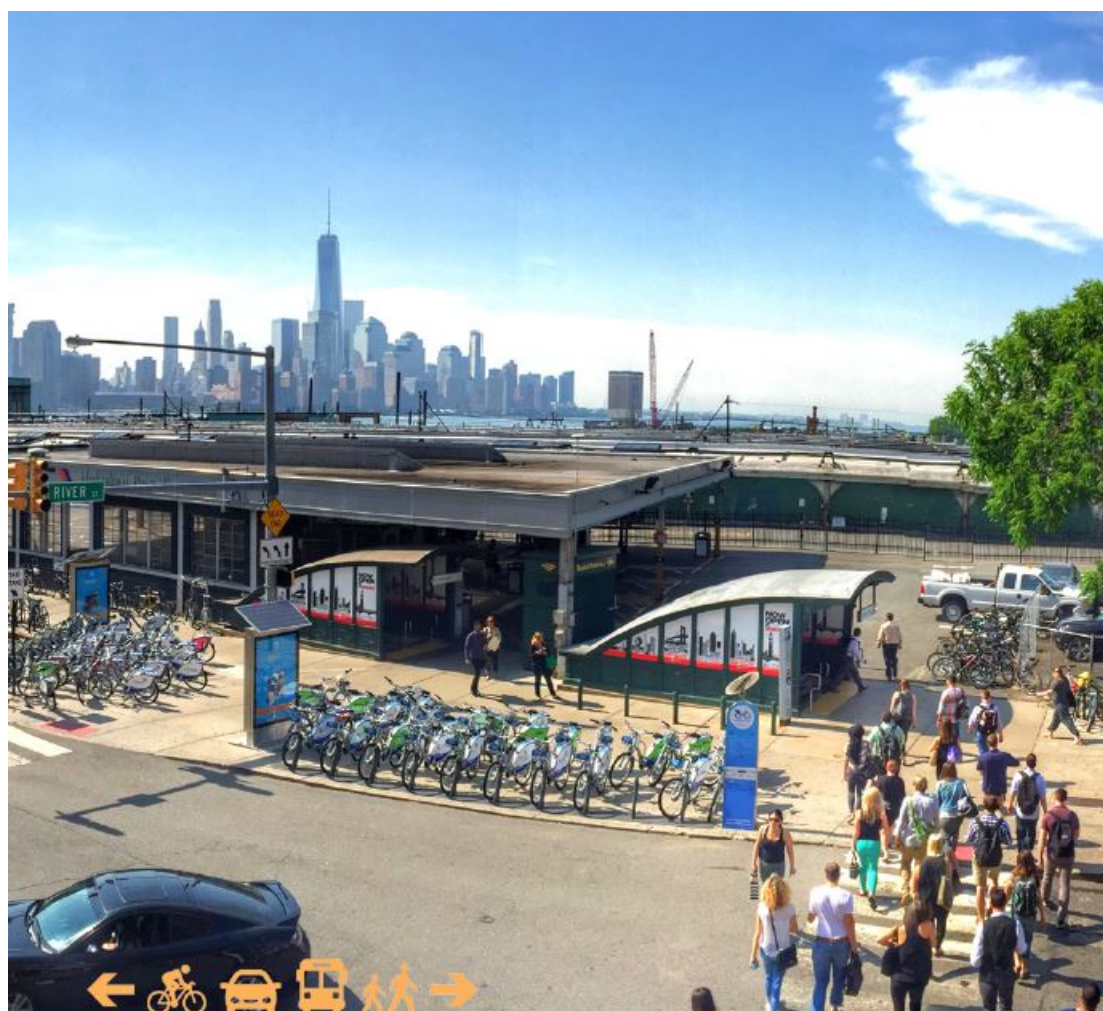


(b)



(c)

Figure 12: (a) the raster format of HRISS, (b) the map with HRISS values assigned to the NJDEP 2012 impervious layer, and (c) the imperviousness difference between the HRISS value and NJDEP 2012 impervious value.



HOBOKEN

STREET DESIGN GUIDE

Complete Streets Design and
Implementation Plan

June 2019








PARK + GARDEN
BUILDING FOOTPRINT

HARBORSIDE LOFTS BUILDING FOOTPRINT

 PUBLIC MEETING #3 ZONE 2 COVE PARK "THE MEADOW"

REBUILD BY DESIGN - HUDSON RIVER   AECOM