



NJ Department of Transportation

GPI

### Safety Voyager



Email address



Password

Sign in

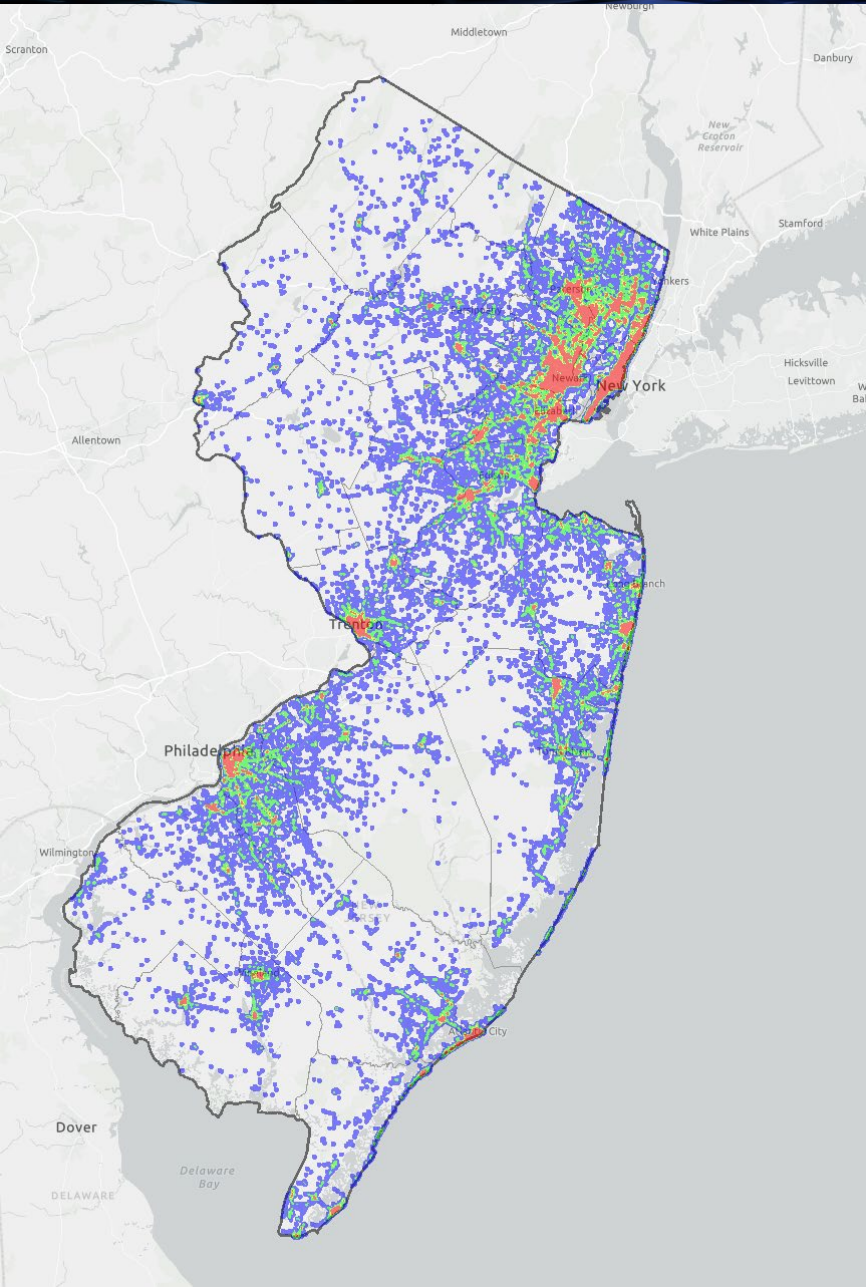
Reset Password

# SAFETY VOYAGER



U.S. Department of Transportation  
Federal Highway Administration

## Module Features



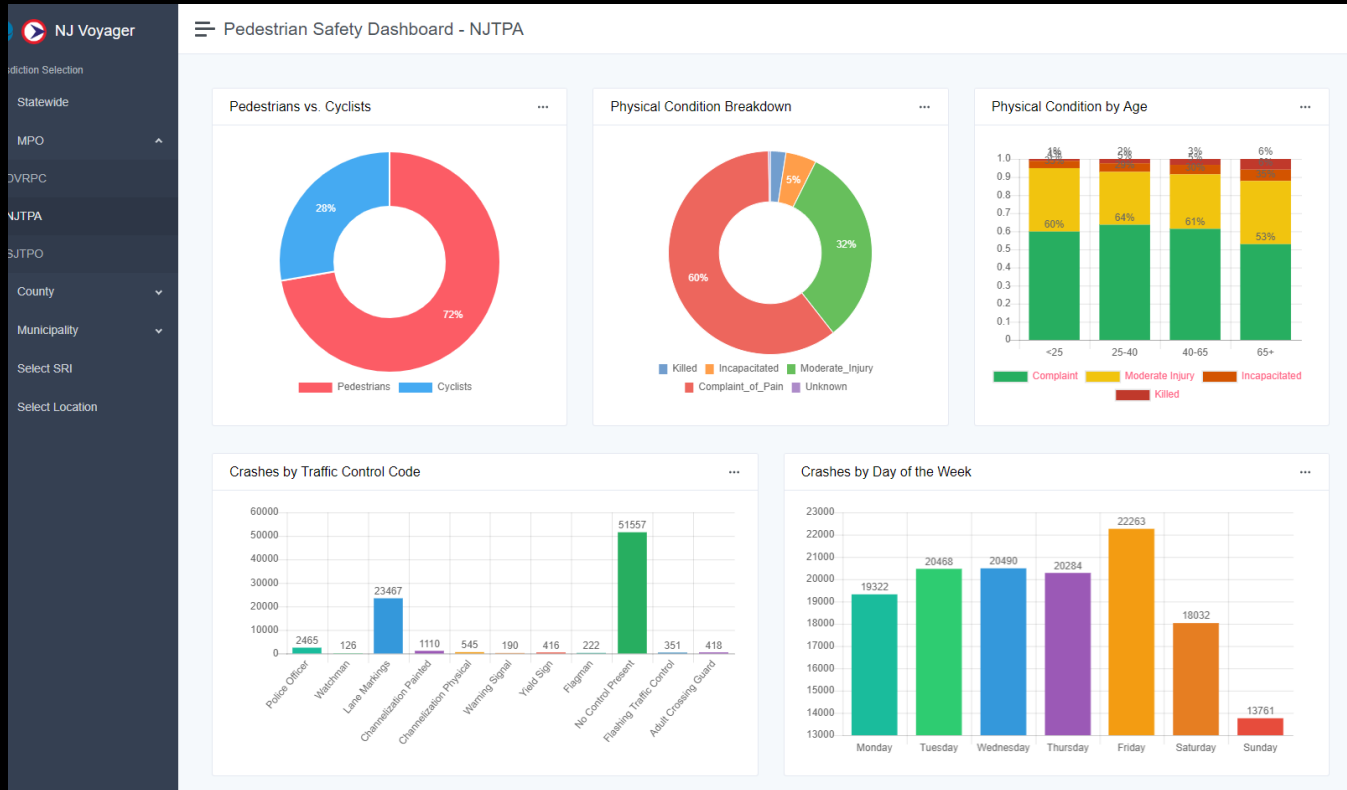
Heat Map to symbolize hot spots

Advanced Query Builder

Dashboard

Reporting

# DASHBOARD WITH METRICS - 1



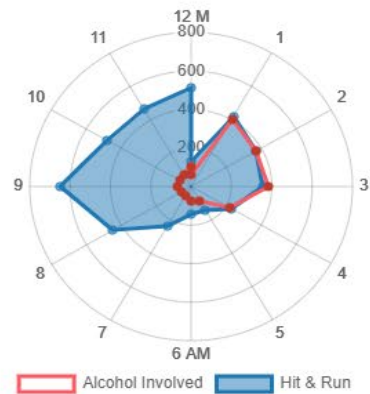
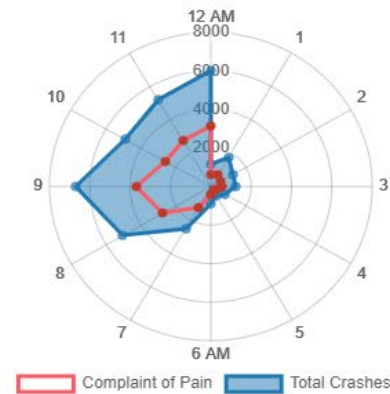
Filters include

- State
- MPO
- County
- Municipality
- SRI
- Geographical Extent
- Each metric can be exported to Excel for advanced analysis

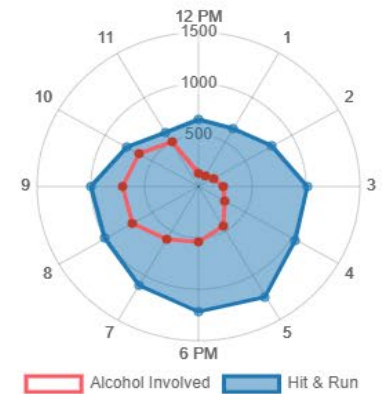
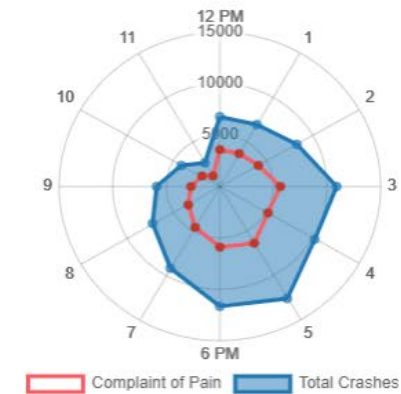


# DASHBOARD WITH METRICS - 2

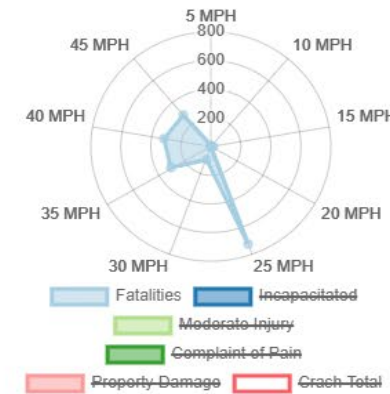
Crashes by Day Time



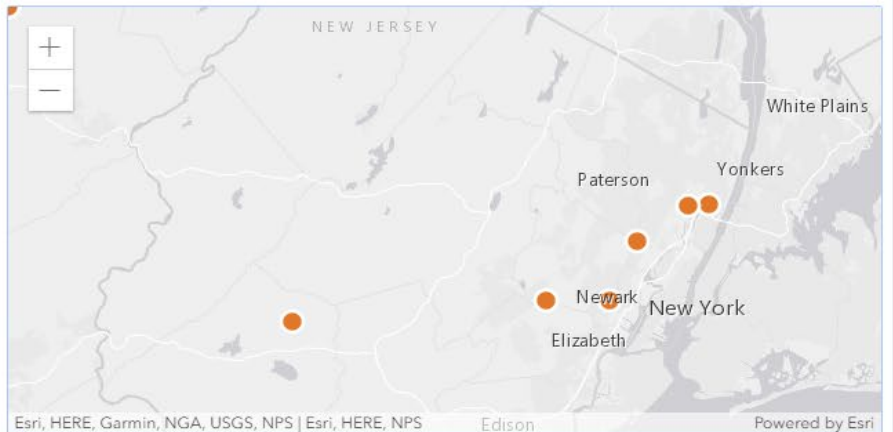
Crashes by Night Time



Crash Severity by Speed

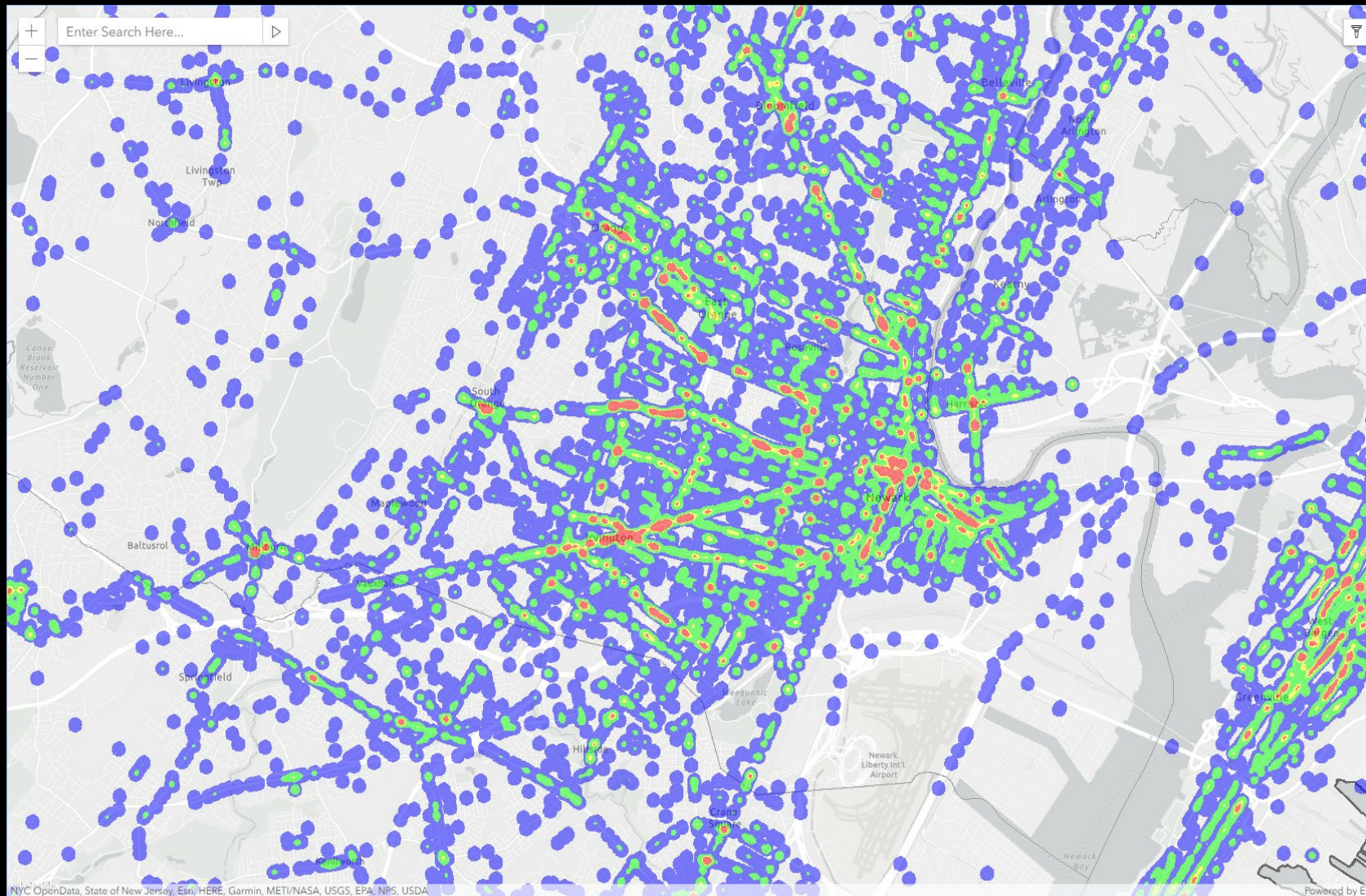


Hot Spot Locations - NJTPA





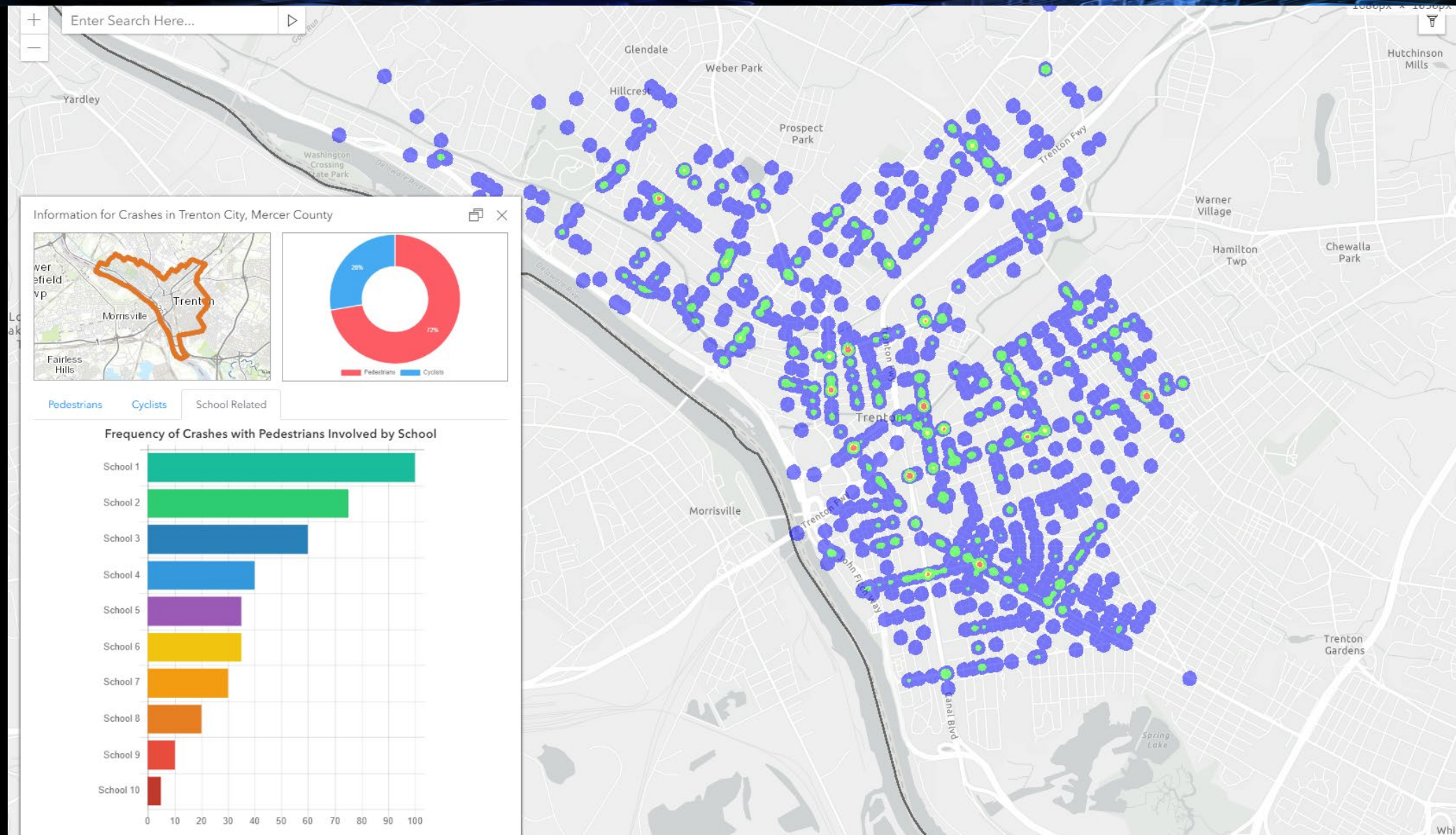
# NEW MAP WITH HEAT MAPS



- Powerful Query Engine
- Reporting by geographical boundaries
- Analysis Tools
- Schools Related Crashes
- Pedestrian
- Cyclist

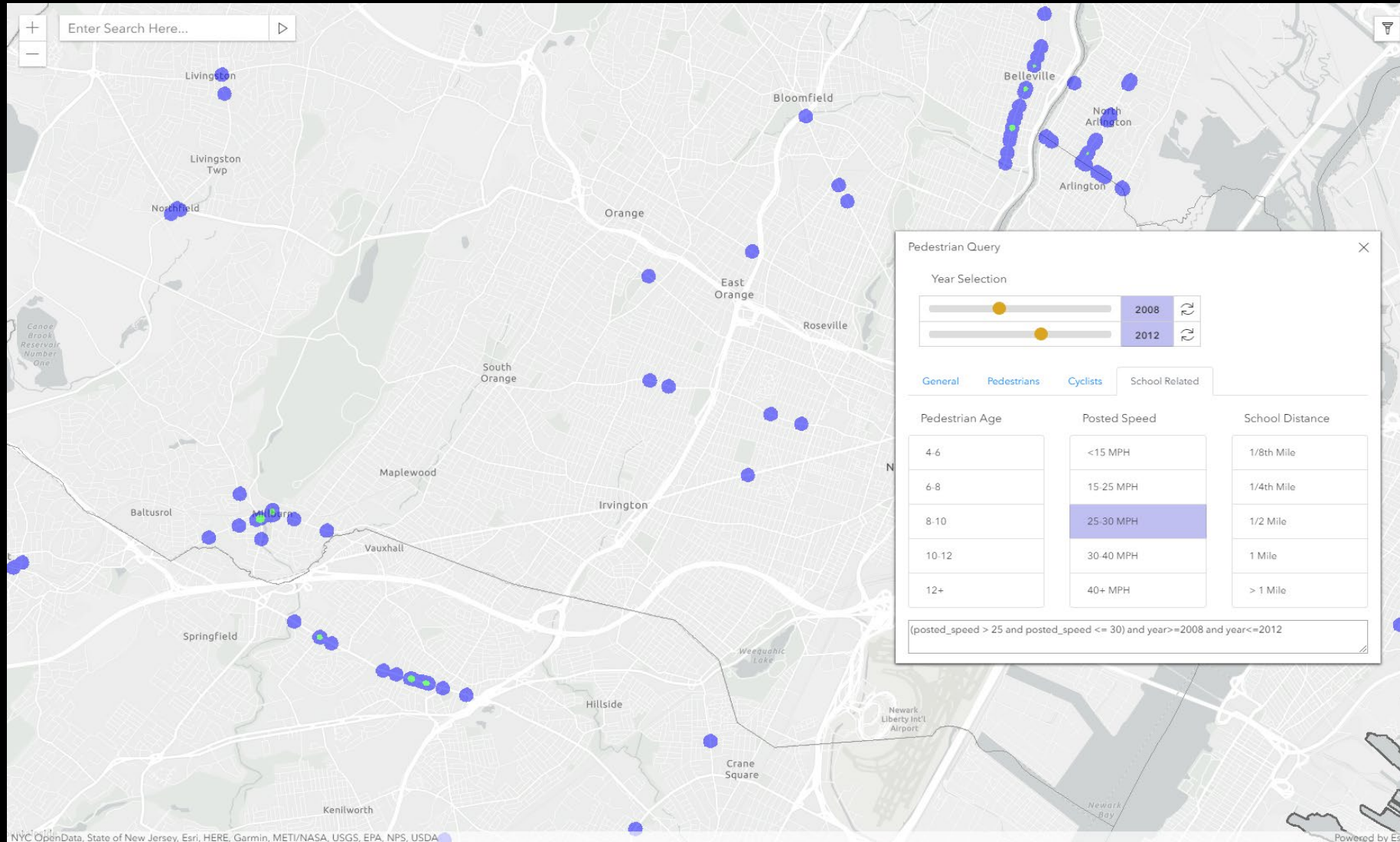


# HEAT MAPS WITH A SIDE DETAIL





# NEW QUERY ENGINE



Sample: Query for 20-25 mph zones and year 2008-2012

[Click here to view the video demonstration.](#)





# THANK YOU FOR YOUR ATTENTION

## QUESTIONS ?

Contact Info:

Chris Zajac

609-963-1893

[chris.zajac@dot.nj.gov](mailto:chris.zajac@dot.nj.gov)