



Division of Environmental Resources

Director, Elkins Green



Division Structure

Three Sections :

- Project Support Unit
Managed by Lauralee Rappleye
- Technical Analysis & Policy Support Unit
Managed by Paula Scelsi
- Environmental Services & Support Unit
Managed by Bob Lane



Bureau of Environmental Program Resources

Elkins Green, Director

609-530-8075

Lauralee Rappleye, Project Manager

609-530-2990

North Local Aid

-Pamela Garrett

609-530-2721

-Sean Ream 530-6690

-Marie Limage 530-3291

Central Local Aid & Statewide TE & SRTS

-Sean Warren

609-530-5428

-Jeff Gendek 530-2988

-John Riggi 530-2827

South Local Aid & Statewide Operations, TSM & Rail

-Jim Sweet

609-530-5365

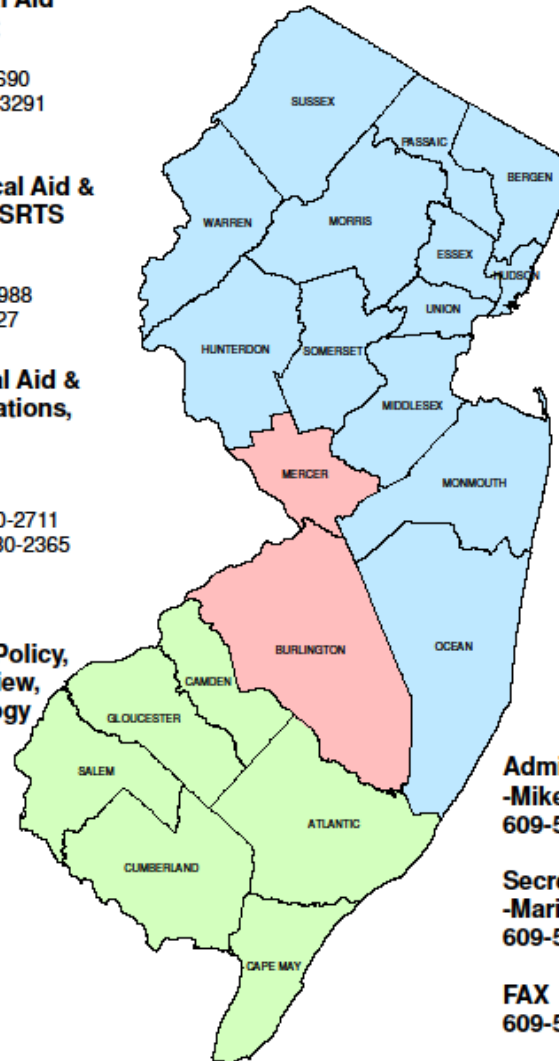
-Chirag B. Patel 530-2711

-Caroline Birsner 530-2365

Statewide Environmental Policy, Regulatory Review, Permits & Ecology

-Paula Scelsi

609-530-5464



Administrative Assistant

-Mike Cushman

609-530-8075

Secretary Assistant

-Marilyn Preston

609-530-2824

FAX

609-530-3767

SHPO

609-530-3488

Updated 2/21/2017

Federal & State Environmental Coordination & Approvals

- Federal Highway Administration
- U.S. Environmental Protection Agency
- U.S. Fish & Wildlife Service
- U.S. Coast Guard
- U.S. Army Corps of Engineers
- HPO and Historic Sites Council
- Green Acres
- DLURP
- Many more.....



Environmental Documents

- Environmental Screenings
- Technical Environmental Studies
- NEPA - CEs, EA/FONSI, EIS/ROD
- EO 215 Exemption Letters or Transmittal of Documents to NJDEP
- Environmental Reevaluations (Right-of-Way, Design Change and Construction) – NEPA and EO215

Data Collection

- Geographic Information System (GIS)
- USFWS Information for Planning and Conservation (IPaC)
- GeoWeb (NJDEP GIS Data)
- Essential Fish Habitat (EFH) Information
- EJSCREEN (Environmental Justice)



U.S. Fish and Wildlife Service

Environmental Conservation Online System

ECOS Login

EJSCREEN

Check out EPA's environmental justice screening and mapping tool today!

Input a Location

e.g.: city, state, zip

Search

NJ-GeoWeb njdep
new jersey department of environmental protection

Searches

Advanced Tools

Map Content

Map Content

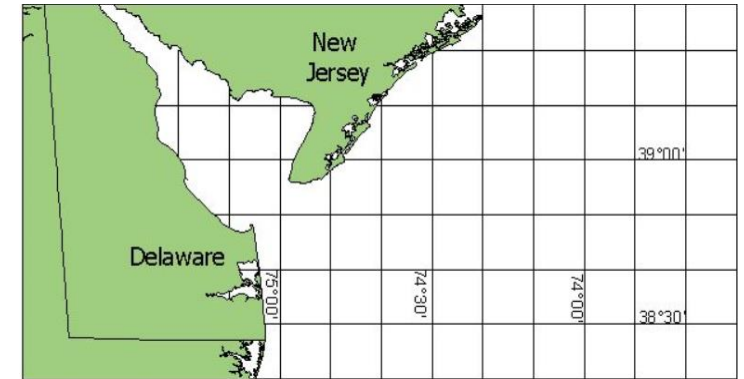
Right-click a layer for more functions

Active Layer: Counties

- GeoWeb
 - Environmental Monitoring
 - Sites and Facilities
 - Planning Areas
 - Landscape/Natural Heritage
 - Historic Areas
 - Water
 - Land
 - Base Layers
 - Geology
 - Natural_2012_Imagery
 - Natural 2012
 - Infrared_2012_Imagery
 - Infrared 2012
 - Natural_2007_Imagery
 - Natural 2007
 - Infrared_2007_Imagery

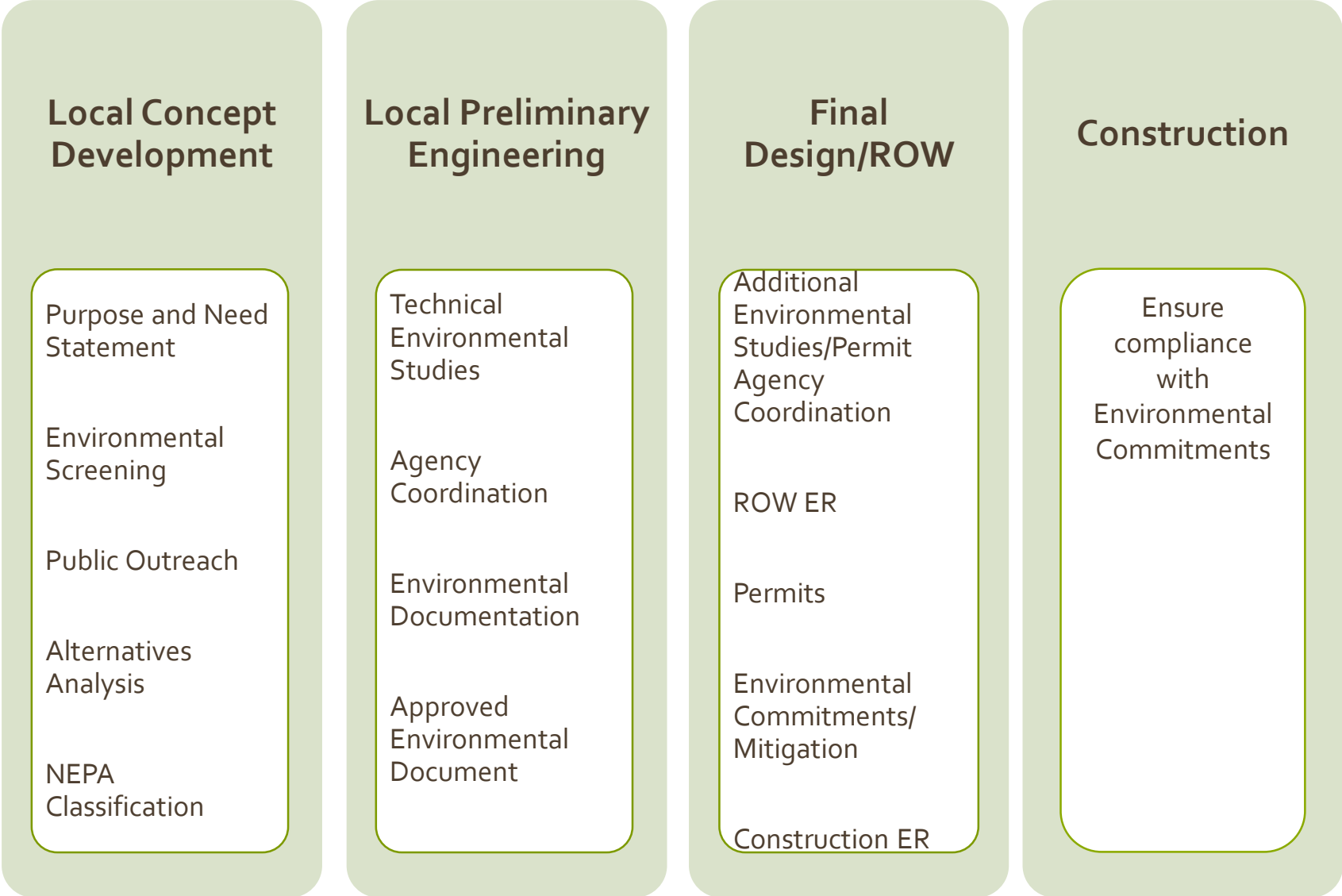
Scale 1:2,424,768.52 GO

Easting (X) : 1,223,516.46 , Northing (Y) : 492,166.78

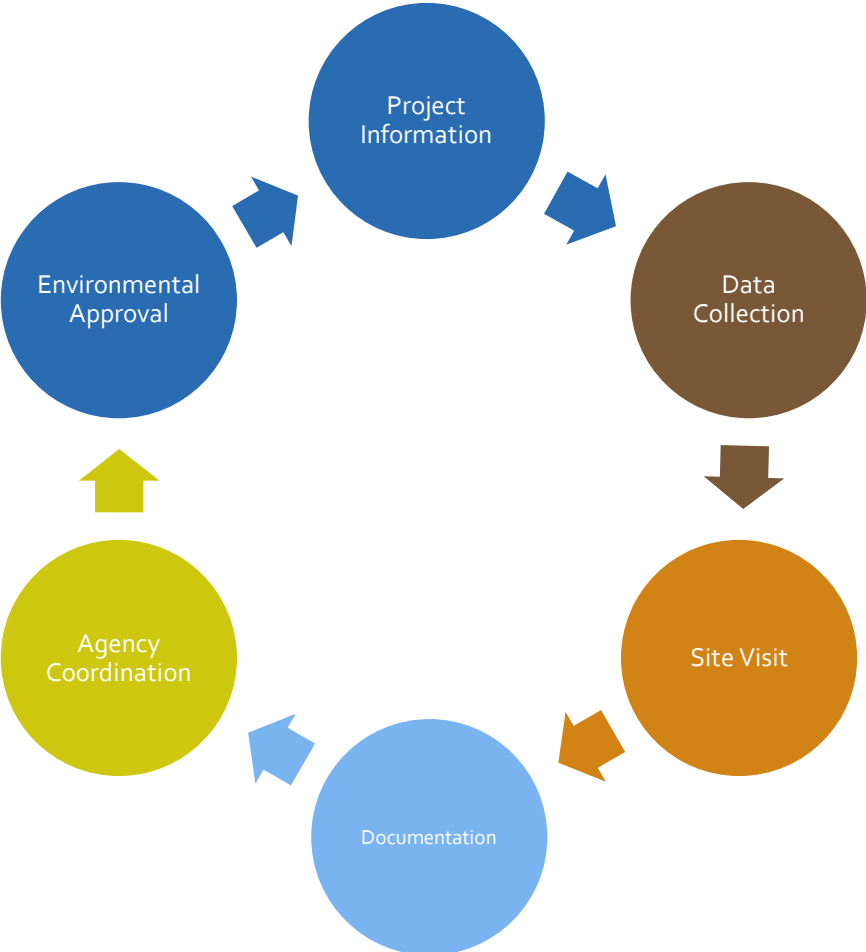


NEW JERSEY AND NATIONAL REGISTERS OF HISTORIC PLACES

Local Project Delivery Process

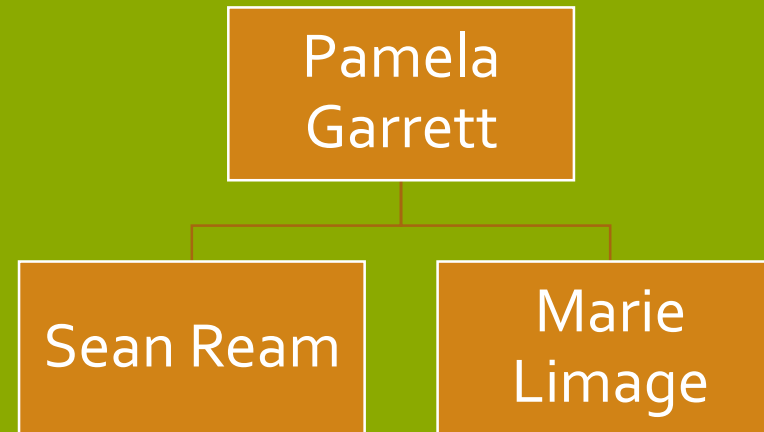


Environmental Process - Simplified



Northern Region

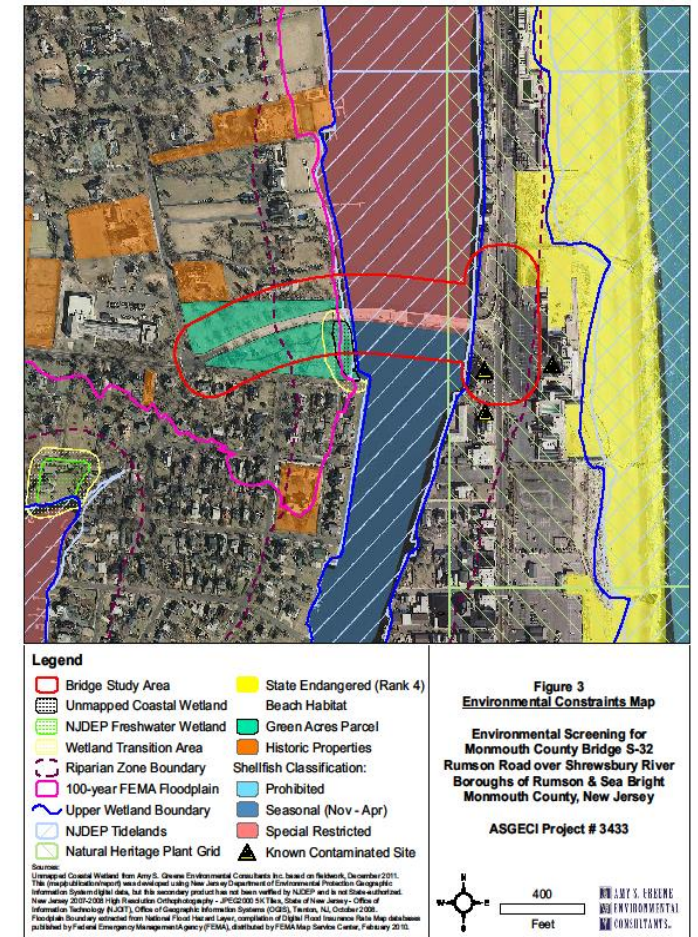
Local Aid District I
Local Aid District II
Local Aid District III
NJTPA



Responsibilities:

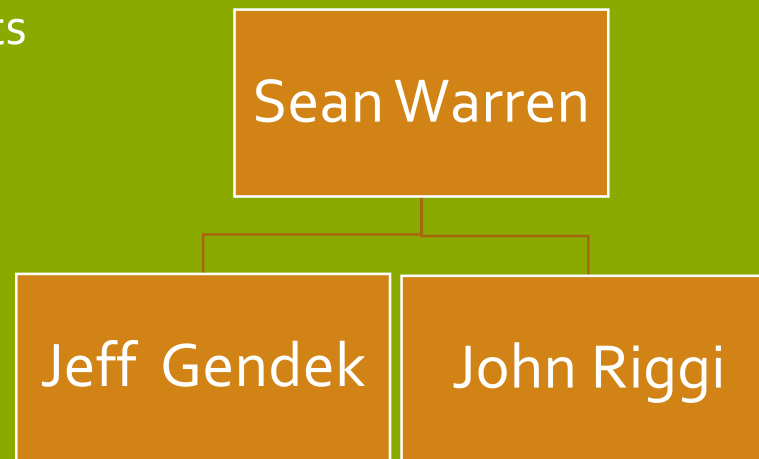
Provide environmental services for Local Aid Districts 1, 2, and 3 (Sussex, Warren, Passaic, Morris, Bergen, Essex, Hudson, Union, Hunterdon, Somerset, Middlesex, Monmouth and Ocean) and NJTPA.

- Collect and compile information on social, economic and environmental resources in the project study area.
- Prepare or oversee the preparation of Technical Environmental Studies, Documents and Permits.
- Coordinate with FHWA and other permitting agencies.
- Attend Project Team, Stakeholder and Public Meetings.
- Monitor construction activities to ensure compliance with environmental commitments



Central Region

Mercer County
Burlington County
Transportation Enhancements
Safe Routes to Schools



Responsibilities

- Statewide Safe Routes to Schools (SRTS: Non-traditional)
 - Local Project Sponsors apply for grant money
 - Apps are rated by the MPOs and Local Aid
 - BEPR does not rate due to nature of limited scope/impact
 - Participate in Design Assistance Program, kick-off meetings
 - Projects usually include new sidewalks, striping, pedestrian countdown signals, raised crosswalks, ADA curb ramps, etc.
- Statewide Transportation Enhancements (TE or TAP: Non-traditional)
 - Local Project Sponsors (municipalities) apply for grant money
 - Screen applications using GIS, NJGEOWEB, etc.
 - Look for potential fatal flaws which include individual permits (requiring mitigation) or an adverse effects to historic resources.
 - Projects usually include traffic calming devices, bump-outs, lighting, benches, bikeways
- Burlington and Mercer Counties: SRTSs, TAPs, HSIPs, TTF-SWAP



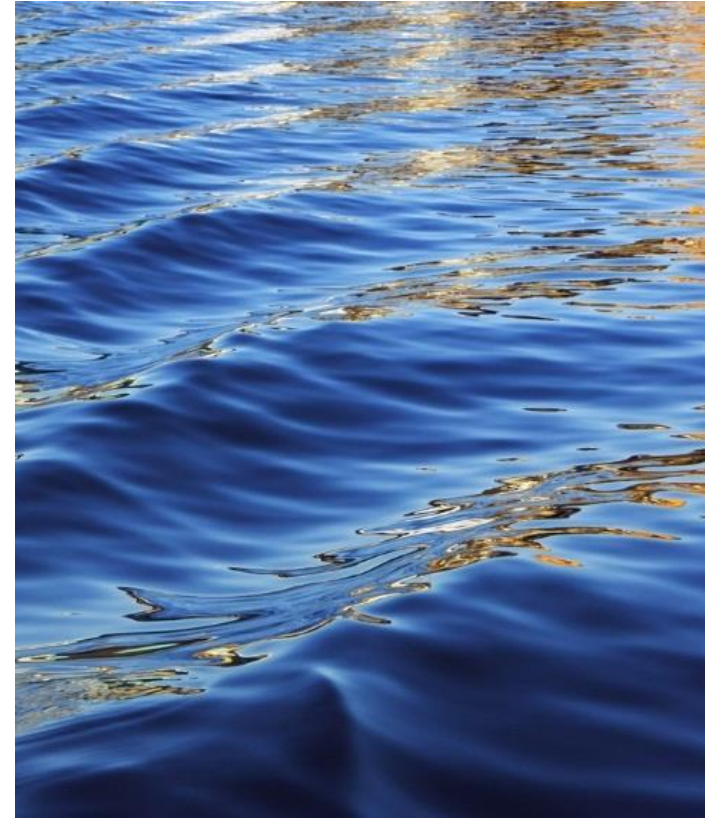
South Region

Local Aid District IV-Cherry Hill
Statewide Maintenance Engineering
Statewide Intelligent Transportation Systems
Statewide Railway Systems Engineering

Jim Sweet

Caroline
Birsner

Chirag B.
Patel



Responsibilities

- Environmental Review and Agency Coordination for Local Aid projects in the six county “Southern Tier” region of NJ. This includes projects such as resurfacings, bridge repair/replacement, CMAQ projects, HSIP, etc.
- Statewide review of all Rail Crossing repair/upgrade projects.
- Statewide review of all ITS projects.
- Statewide review of Maintenance Engineering projects such as bridge painting, guiderail improvements, pavement crack sealing (to prolong life of roadway surface), etc.
- Environmental review and Agency Coordination of emergency projects for Southern Region (i.e. Hurricane Sandy, Hurricane Irene)
- Construction monitoring to ensure compliance with Permit conditions, environmental commitments and, mitigation measures.





Technical Analysis & Policy Support Unit

Purpose:

Provide guidance, advice, and policy recommendations related to environmental regulations and practices to Department leadership and staff.

Paula Scelsi
(Permits/Ecology)

Lauralee Rappleye
(Cultural Resources)



Responsibilities

- Consider the implications of proposed Federal and State Environmental laws, regulations, policies and procedures on Department practices.
 - Prepare and coordinate comments regarding proposed regulatory changes for submission to upper management and regulatory agencies.
 - Provide guidance to staff on regulatory changes and/or implementing procedures.
- Identify and implement initiatives to improve efficiency in the environmental compliance process, developing programmatic and interagency agreements, and internal procedures, as appropriate.
- Provide assistance and SME knowledge to resolve project-specific and program-wide technical issues relative to the environmental compliance process with Federal and State regulatory agencies
- Educate the Division and other Units by identifying and disseminating information about training opportunities related to technical environmental and regulatory compliance issues.
- Provide environmental support to other Units within the Department





Current Policy Initiatives

- Developing an Endangered Species Act Section 7 Formal Programmatic Consultation for the Bog Turtle to help streamline the process for Department actions
- Involved with a Statewide interagency Group discussing pertinent issues regarding Habitat Connectivity



Threatened & Endangered Species



Piping Plover



Peregrine Falcon



Bobcat



Timber Rattlesnake



Bald Eagle



Pine Barrens Tree Frog



Wood Turtle



Arogos Skipper



Seabeach Amaranth



Swamp Pink



Dwarf Wedge Mussel

Finding the Balance...

- We strive to find the balance between regulatory compliance and efficiently moving projects through the Pipeline. Public safety and efficient movement of people and goods through the State is critical to commerce and quality of life.
- It is understood that the improvement of our transportation infrastructure is critical but, at the same time, we must find a way to construct and re-construct in an environmentally responsible manner.



Division of Environmental Resources

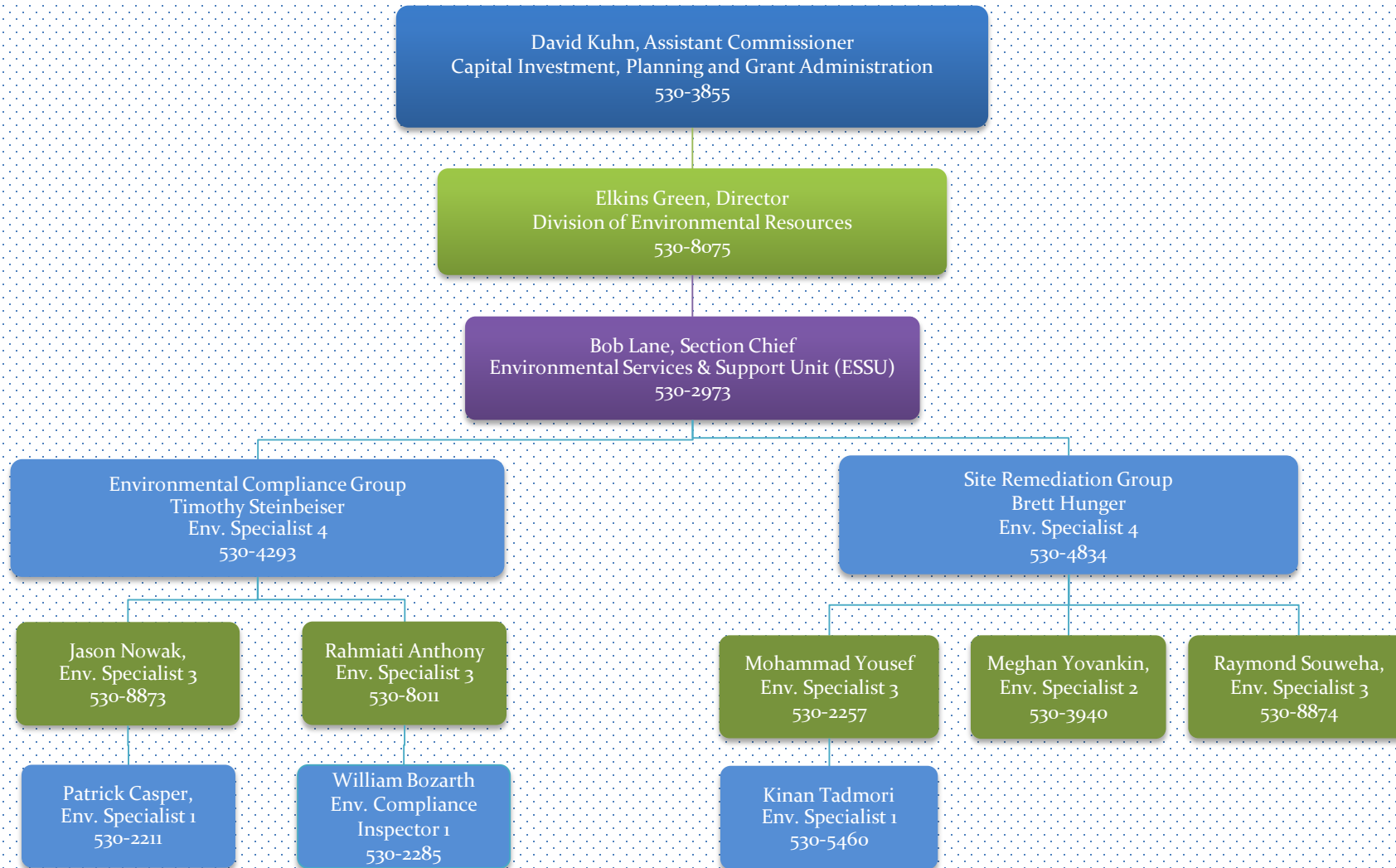
Environmental Services & Support Unit (ESSU)

Consists of two major groups:

- Site Remediation**
- Environmental Compliance**

ESSU Organization Chart

951 Parkway Avenue, Ewing, NJ 08625-0600
Phone: (609) 530-2973, Fax: (609) 530-5305

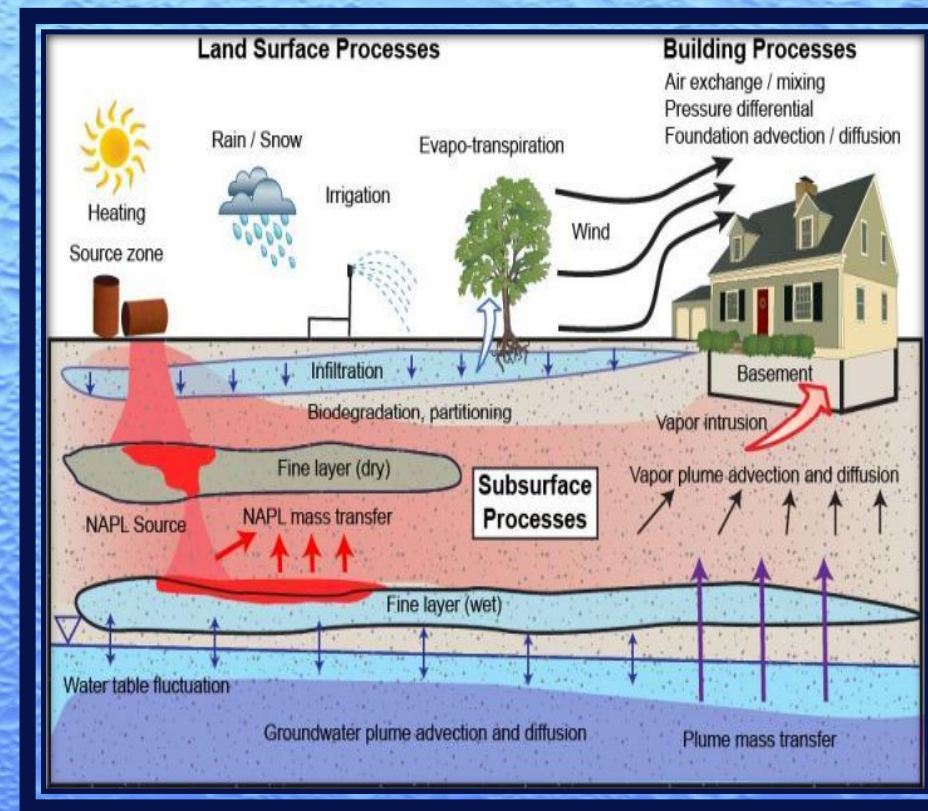
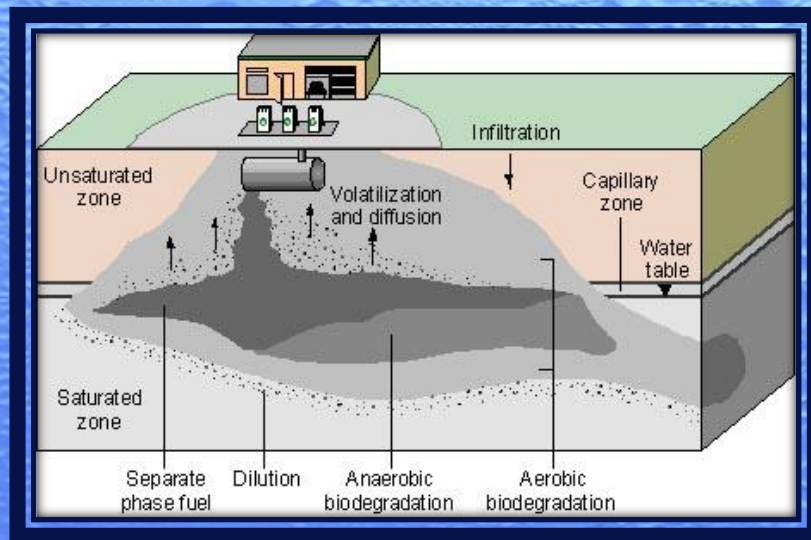
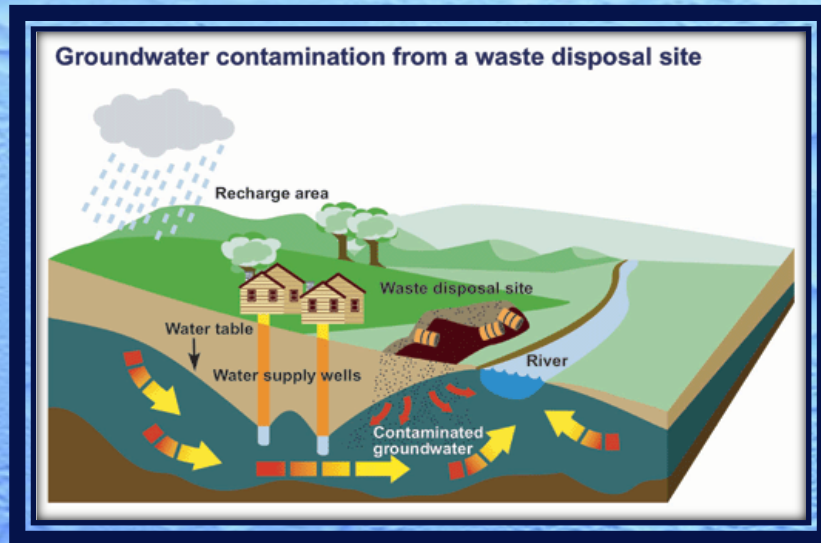


Site Remediation Group (SRG)

The primary functions of the SRG:

- Conduct hazardous material discharge investigations/assessments/remediation
- Manage emerging hazardous materials issues at NJDOT maintenance facilities and Right of Way (ROW) sites
- React, in accordance with NJDEP environmental rules and regulations.
- **Goal: protect public health, safety, and the environment**

Groundwater Contamination from an Waste Disposal Site, Underground Storage Tank, and Vapor Intrusion



Site Remediation

- **Coordinate environmental activities with Licensed Site Remediation Professionals (LSRPs), consultants, Regulatory agencies, property owners, NJDOT facilities, Regional offices, and other NJDOT Divisions.**
- **Conduct Private Potable Well sampling, perform vapor intrusion investigation, prepare access agreements, and perform off-site environmental investigation when needed.**
- **Maintain and update tracking systems (FMIS, eTRAK, and Excel spreadsheets).**
- **Coordinate and schedule remedial activities in consultation with NJDOT Facilities, Operations and contractors.**
- **Coordinate with LSRPs to ensure NJDEP reports & Forms are submitted within required timeframes/deadlines.**

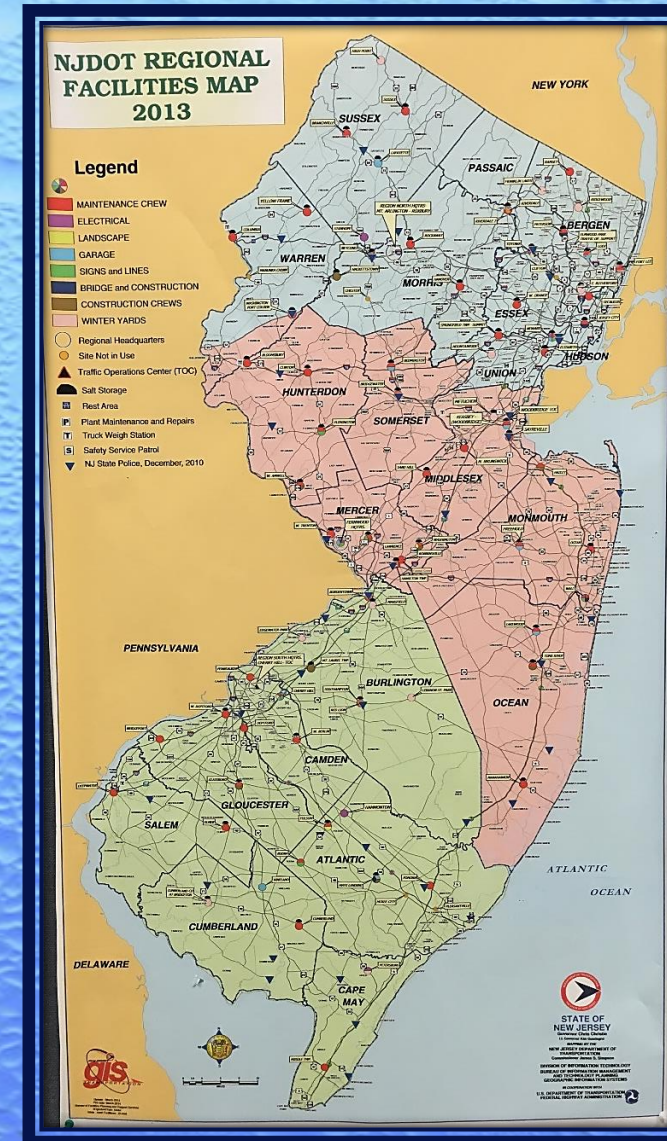
Site Remediation

- **Provide public notification (PN) and NJDOT contact information for remedial activities.**
- **Develop programmatic environmental and regulatory solutions and guidance documents.**
- **Provide DAGs support relative to 3rd party legal actions.**
- **Prepare and execute 3rd Party Property Access Agreements (PAAs) in support of ROW Access Permitting Unit**
- **Process 3rd party Deed Notice (DN) / Classification Exemption Area (CEA) legal documents.**
- **Develop and execute PAAs for NJDOT and consultant to access adjacent properties to conduct remedial investigation activities.**

Site Remediation Group (SRG)

- Projects include NJDOT Maintenance Facilities and Right of Way

Active Projects	35
Consultants	7
Agreements	17
Average Yearly Spending	\$3,418,681.64



Environmental Compliance Group



Environmental Compliance

- **Solid Non-Hazardous Waste**
 - Develop and administer a state-wide solid waste disposal recycling program to address wastes that are routinely generated by Operations forces
- **Hazardous Waste**
 - Used, spent, and out-of-date paints, gasoline, solvents, laboratory chemicals and unknowns

Environmental Compliance

- **Tire Recycling**
 - Develop and administer a state-wide tire recycling program to address used tires generated by Operations forces.
 - Whole tires with and without rims, tire treads, and tire pieces
- **Scrap Metal**
 - Develop and administer the NJDOT part of a state-wide Treasury Scrap metal Recycling Contract.
 - Mixed steel, stainless steel, brass, aluminum and lead acid batteries
- **Treasury Contracts**
 - Administer appropriate environmental related Treasury contracts to accomplish tasks that are outside the scope of routine contracts.

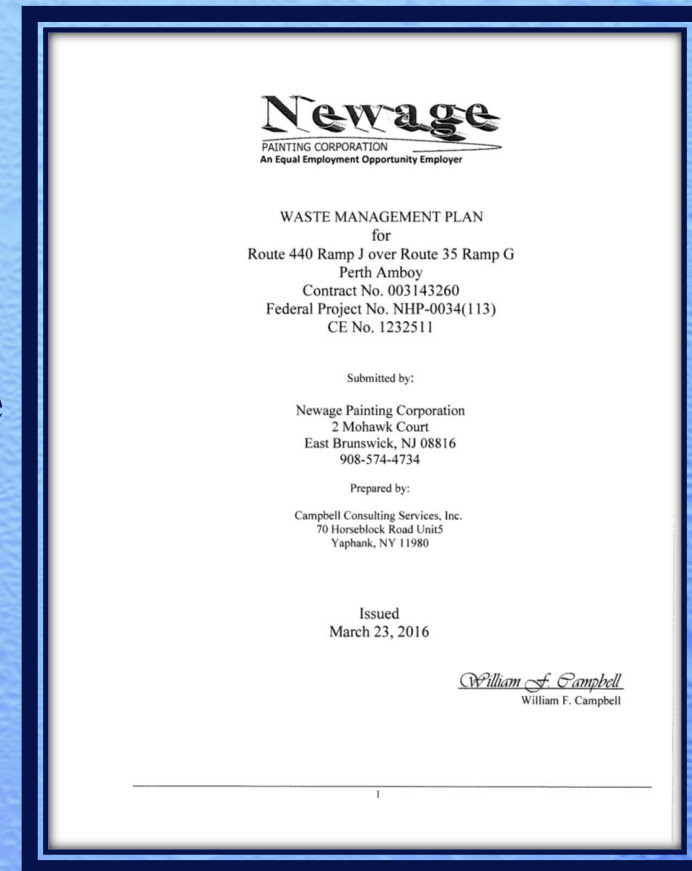
Environmental Compliance

- **Thiokol Complex**
 - Maintain the 90-Day Hazardous Waste Storage Area located in the Thiokol Complex.
 - Unpermitted storage of hazardous waste by generator for limited timeframe
- **Operations**
 - Procure and distribute waste management supplies to operations state-wide.
 - Spill clean-up materials, booms, dikes, empty drums, funnels and labels.



Environmental Compliance

- **Guidance**
 - Provide guidance to NJDOT units/areas with tasks or projects that may have environmental impacts.
 - Review CPM's and Operations' bridge painting contracts "Hazardous Waste Management Plans" for compliance to the contract specifications.



Environmental Compliance

- **Stormwater**

- Serves as the point of contact with the NJDEP regarding agency-generated stormwater and New Jersey Pollution Discharge Elimination Systems (NJPDES) permitting
- Permit Reporting
- Annual Reports for each Region
- Annual NJDEP Inspections
- Develop and update Stormwater Pollution Prevention Plans (SPPP).
- Conducts audits of maintenance facilities for compliance with all applicable regulations



Environmental Compliance

- **Drinking Water**
 - Collect periodic potable well samples from NJDOT/NJMVC facilities to ensure compliance with Small Water Purveyor Permit compliance and to ensure safe drinking water at non-regulated facilities.
- **Permits**
 - Procure routine and emergency NJDEP Land Use Permits (e.g. Wetlands, Flood Hazard Area) and other permits/regulatory approvals for projects initiated by Operations and Facilities/Support Services

Environmental Compliance

- **Laboratory Contract/Active Consultant Agreement**
 - Develop and administer Laboratory Services Treasury Contract (T2543)
 - Groundwater, Drinking Water, Stormwater, Soil, building material (asbestos, lead paint, etc.)
- **Environmental Basin Studies**
 - Establishing maintenance and best management practices for identified basins
 - Improving water quality
 - Helping to alleviate possible flooding issues
- **Environmental Screenings**
 - Screen projects initiated by Operations and Facilities for potential environmental regulatory concerns